

PROPOSED DRAFT PLAN OF COMMON ELEMENT CONDOMINIUM

MATTAMY (BROWNRIDGE) LIMITED – MARTIN EAST
BLOCK 257 & 258, 20M-2019

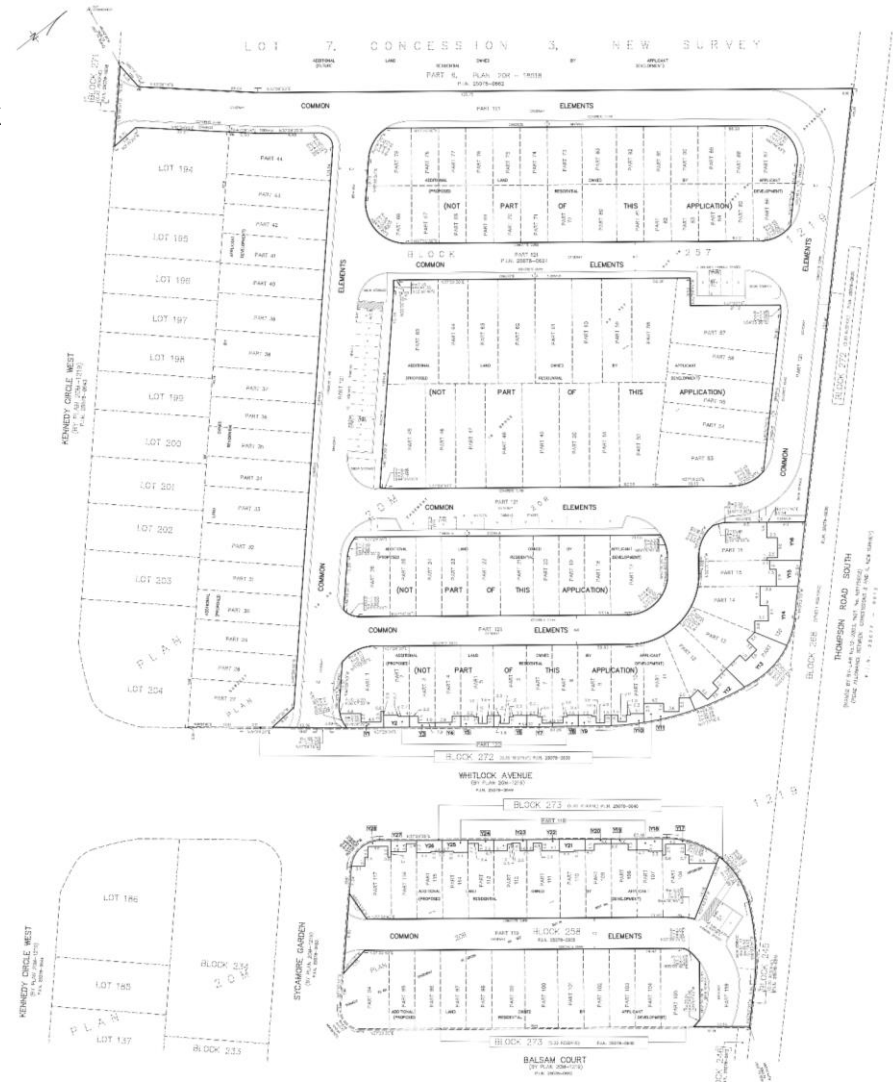
TOWN OF MILTON PUBLIC MEETING
MONDAY, DECEMBER 14, 2020

LOCATION



PROPOSAL

- Proposal to create a Plan of Common Element Condominium consisting of 117 residential units in the form of rear lane, front loaded and back-to-back townhouses connected via common elements.
- Block 257 & 258 form part of phase 1 of the Mattamy Martin East Plan of Subdivision (24T-17002/M).
- The *Condominium Act* and *Planning Act* requires public meetings for certain types of Condominiums. As the type of Condominium (Common Element) was not identified at the time of public meeting for the Plan of Subdivision, a separate public meeting is required.
- Both condo blocks are Site Plan Approved. Detailed design drawings and technical studies were submitted and approved by staff in support of the Site Plan Applications (SP-14/19 & SP-18/19).
- Approximately half the units have been occupied, with the remaining occupancies to occur between now and February 2021.



PROPOSAL



NEXT STEPS

- After this meeting, upon completion of the consultation and review process, staff recommends that draft approval of the Plan of Condominium be granted.