



The Corporation of the Town of Milton

Report To: Council

From: Jill Hogan, Commissioner, Development Services

Date: May 11, 2026

Report No: DS-036-26

Subject: Recommendation Report - Notice of Intention to Designate - 11374 Guelph Line_ Thomas Easterbrook Home

Recommendation: **THAT** Staff Report DS-036-26 entitled: "Notice of Intention to Designate - 11374 Guelph Line_ Thomas Easterbrook Home be received and;

THAT Milton Council recognizes the historic house at 11374 Guelph Line in the Town of Milton as being of heritage significance;

THAT Milton Council designate the property under Part IV of the Ontario Heritage Act, R.S.O. 1990, c. O.18, for the reasons outlined in the Reasons for Designation attached as Appendix 1 to this Report;

AND THAT the Town Clerk provides the Notice of Intention to Designate as outlined in Section 29 (4) of the Ontario Heritage Act;

AND FURTHER THAT once the thirty-day objection period has expired and if there are no objections, a designation by-law will be brought forward for Council adoption.

EXECUTIVE SUMMARY

- The original two-storey Georgian stone house was built by Thomas Easterbrook, founder of Brookville, for his wife, Hannah Youart. Construction on the two-storey Georgian mansion began in 1835 and was completed in 1837.
- Its cultural heritage value and interest lie in its physical, historical, and contextual value.
- Architecturally, it stands as an exemplary model of Georgian design, with distinct stonework, a low-pitched hip roof, and three stately stone chimneys.
- Historically, the Easterbrook residence is woven into the founding of the hamlet of Brookville. Thomas Easterbrook, the influential founder of Brookville, played pivotal roles as the reeve of Nassagaweya, postmaster, and store proprietor.
- Contextually, the property enriches the heritage landscape as a landmark of Brookville and is one of the few remaining original settlement stone homes.

EXECUTIVE SUMMARY

- The property owner has voluntarily responded to the heritage designation program and desires that their property be designated.
- Staff has evaluated this historic house as a significant built heritage resource for the Town of Milton and recommend that it be designated under Part IV of the Ontario Heritage Act. (See Appendix '1')

This significant heritage resource fulfils more than two of the evaluation criteria set out in Part IV of the Ontario Heritage Act (R.S.O. 1990), Ontario Regulation 9/06 (See Appendix 2). As such, it is worthy of designation under the Ontario Heritage Act.

REPORT

Background

The original two-storey Georgian stone house was built by Thomas Easterbrook for his wife, Hannah Youart. Construction on the two-storey Georgian mansion began in 1835 and was completed in 1837.

The house possesses remarkable cultural heritage value, demonstrated through its physical attributes, historical associations, and contextual setting. Architecturally, it stands as an exemplary model of Georgian design, with distinct stonework, a low-pitched hip roof, and three stately stone chimneys.

Historically, the Easterbrook residence is woven into the founding of the hamlet of Brookville. Thomas Easterbrook, the influential founder of Brookville, played pivotal roles as the reeve of Nassagaweya, postmaster, and store proprietor. The town—originally named Easterbrook in his honour—was later renamed Brookville in the early 1900s.

In its context, the property enriches the heritage landscape of Brookville and is one of the few remaining original settlement homes. Together, these qualities highlight the house's lasting importance to both the community and the Town of Milton.

Discussion

Brookville, known by several names throughout its history, was first settled in 1831 by Elias Easterbrook and his wife, Joan (née Stranger) Easterbrook. Together, they raised eight children and, by 1877, owned at least 400 acres of land. The settlement was initially called Nassagaweya, a Mississauga term meaning “river with two outlets.” It was later renamed Easterbrook to honour the family, especially after Elias's fourth son, Thomas Easterbrook,

Discussion

who became the first reeve of Nassagaweya. Thomas held multiple roles: he served on the township's inaugural council in 1850, completed six terms as reeve, and served as postmaster and store owner. The community ultimately adopted the name Brookville in the early 1900s, reflecting its evolving identity.

The property was originally granted to John Young in 1834 and acquired by Thomas Easterbrook a year later. In 1837, Thomas completed construction of the house for his first wife, Hannah Youart, with whom he had eight children. After Hannah's passing in 1859, Thomas married Deborah Emery and had two more children. Both Thomas and Deborah, along with several family members, are interred at East Plains Road United Church Cemetery in Burlington. Thomas eventually relocated to Burlington, and in 1865, he leased the house to Henry Stingle, who operated it as a hotel and carriage stop during a period when the Guelph Line was a bustling carriage route between Guelph and Burlington.

Subsequent owners of this property include James Mline (1877); David Milne and James Leachman (1893); John Henry Mline (1895); Neil McMillan (1901); James Inglis (1902); the Henderson family (1916-1947); Douglas and Mary Turnbull (1947); the Maclean family (1957-1965); Helen Redgrave (1965), who named the property Windmill Farm; and Hendry and Christina Emerson (February 1976).

The current owners, Jim and Mary Lynn Williams, bought the property in November 1976 and completed a major restoration of the house, and won a Milton Heritage Day award for architectural preservation in 1994.

Physically, this elegant two-storey Georgian-style stone house features a symmetrical five-bay rectangular plan, a random-stone exterior accented by quoins, side and rear wings, and a partially exposed stone basement.

The house is topped by a low-pitched gable roof, covered in asphalt, and finished with slightly projecting eaves. The roof ends, and soffits are detailed with plain verges and frieze. Three-stone chimneys with double flues efficiently heat most of the rooms. A former drive-in shed or carriage house to the side of the house is now enclosed as the master bedroom. On the other side of the shed is a stone summer kitchen or keeping room, which has currently been converted into a family room. The original maple floorboards are still intact.

The main entrance is approached via a straight run of four broad stone steps and a stone landing. The entrance itself is marked by a central, neoclassical, semi-circular eight-panel door, framed by stone voussoirs, a multi-light transom, and Doric piers. Upper-storey windows are 12-over-8 double sash, main-floor windows are 12-over-12 double sash, and basement windows are fixed six-panel single sash. All windows are distinguished by stone lintels or voussoirs, lug sills, and plain trims, with internal shutters gracing the ground-floor windows. Notably, the hand-sawn timber rafters of the gable-roofed barn, supported by a robust stone foundation, are also worthy of conservation.

Discussion

Contextually, this property holds significant contextual value as one of Brookville's original settlement houses. The Easterbrooks were among the first permanent families to settle in the township. Today, hundreds of Easterbrook descendants live in the Guelph, Milton and Hamilton areas. The home's historical importance is a great testimony to the founder of Brookville and may be considered a landmark.

Character Defining Elements/Heritage Attributes

Key attributes that reflect the cultural heritage value of the property include:

- The massing of the two-storey rectangular five-bay random stone building with quoins, side and rear wings, and a partial stone basement.
- The low-pitched gable asphalt roof features projecting eaves, verges, plain frieze and plain wood soffits.
- Three stone chimneys with double flues
- 2 sashes, 12 over 8 windows with stone voussoirs, lug sills and plain trims at the upper floor of the Northeast and Southeast elevation
- 2 sashes, 12 over 12 windows with interior shutters, stone lintels, lug sills and plain trims at the main floor of the Northeast elevation
- Single sash, 6 panels, basement windows with stone voussoirs and plain trims at the Northeast elevation
- Basement six-panel windows with stone lintels, voussoirs, lug sills, and plain trims.
- The semi-circular, 2 sashes, 6 over 6 windows with multi lights transom, stone voussoirs, interior wooden shutters, lug sills and plain trims on the Southwest elevation
- Single sash, four-pane windows with stone lintels, lug sills and plain trims at the Northwest Elevation
- A straight run four-step stone entrance with a stone landing
- A single leaf, neoclassical, eight-panel door with stone voussoirs and a multiple-light transom and Doric piers



The Corporation of the Town of Milton

Report #:
DS-036-26
Page 6 of 6

Recognition of Traditional Lands

Haudenosaunee people. The Town of Milton shares this land and the responsibility for the water, food and resources. We stand as allies with the First Nations as stewards of these lands.



Reasons for Designation

11374 Guelph Line_ Thomas Easterbrook House

Legal Description

Nassagaweya Con 3 NE Part Lot 8. Plan 20m984 Bocks 20 and 21 and RP 20r2462 Part 2

Description of Property

The original two-storey Georgian stone house was built by Thomas Easterbrook for his wife, Hannah Youart. Construction on the two-storey Georgian mansion began in 1835 and was completed in 1837.

Statement of Cultural Value and Interest

The house possesses remarkable cultural heritage value, demonstrated through its physical attributes, historical associations, and contextual setting. Architecturally, it stands as an exemplary model of Georgian design, with distinct stonework, a low-pitched hip roof, and three stately stone chimneys.

Historically, the Easterbrook residence is woven into the founding of the hamlet of Brookville. Thomas Easterbrook, the influential founder of Brookville, played pivotal roles as the reeve of Nassagaweya, postmaster, and store proprietor. The town—originally named Easterbrook in his honour—was later renamed Brookville in the early 1900s.

In its context, the property enriches the heritage landscape of Brookville and is one of the few remaining original settlement homes. Together, these qualities highlight the house's lasting importance to both the community and the Town of Milton.

Historical Value

Brookville, known by several names throughout its history, was first settled in 1831 by Elias Easterbrook and his wife, Joan (née Stranger) Easterbrook. Together, they raised eight children and, by 1877, owned at least 400 acres of land. The settlement was initially called Nassagaweya, a Mississauga term meaning “river with two outlets.” It was later renamed Easterbrook to honour the family, especially after Elias’s fourth son, Thomas Easterbrook, who became the first reeve of Nassagaweya. Thomas held multiple roles: he served on the township’s inaugural council in 1850, completed six terms as reeve, and served as postmaster and store owner. The community ultimately adopted the name Brookville in the early 1900s, reflecting its evolving identity.

The property was originally granted to John Young in 1834 and acquired by Thomas Easterbrook a year later. In 1837, Thomas completed construction of the house for his first wife, Hannah Youart, with whom he had eight children. After Hannah’s passing in 1859, Thomas married Deborah Emery and had two more children. Both Thomas and Deborah, along with several family members, are interred at East Plains Road United Church Cemetery in Burlington. Thomas eventually relocated to Burlington, and in 1865, he leased the house to Henry Stingle, who operated it as a hotel and carriage stop during a period when the Guelph Line was a bustling carriage route between Guelph and Burlington.

Subsequent owners of this property include James Mline (1877); David Milne and James Leachman (1893); John Henry Mline (1895); Neil McMillan (1901); James Inglis (1902); the Henderson family (1916-1947); Douglas and Mary Turnbull (1947); the Maclean family (1957-1965); Helen Redgrave (1965), who named the property Windmill Farm; and Hendry and Christina Emerson (February 1976).

The current owners, Jim and Mary Lynn Williams, bought the property in November 1976 and completed a major restoration of the house, and won a Milton Heritage Day award for architectural preservation in 1994.

Physical or Design Value

This elegant two-storey Georgian-style stone house features a symmetrical five-bay rectangular plan, a random-stone exterior accented by quoins, side and rear wings, and a partially exposed stone basement.

The house is topped by a low-pitched gable roof, covered in asphalt, and finished with slightly projecting eaves. The roof ends, and soffits are detailed with plain verges and frieze. Three-stone chimneys with double flues efficiently heat most of the rooms. A former drive-in shed or carriage house to the side of the house is now enclosed as the master bedroom. On the other side of the shed is a stone summer kitchen or keeping room, which has currently been converted into a family room. The original maple floorboards are still intact.

The main entrance is approached via a straight run of four broad stone steps and a stone landing. The entrance itself is marked by a central, neoclassical, semi-circular eight-panel door, framed by stone voussoirs, a multi-light transom, and Doric piers. Upper-storey windows are 12-over-8 double sash, main-floor windows are 12-over-12 double sash, and basement windows are fixed six-panel single sash. All windows are distinguished by stone lintels or voussoirs, lug sills, and moulded trims, with internal shutters gracing the ground-floor windows. Notably, the hand-sawn timber rafters of the gable-roofed barn, supported by a robust stone foundation, are also worthy of conservation.

Contextual Value

Contextually, this property holds significant contextual value as one of Brookville's original settlement houses. The Easterbrooks were among the first permanent families to settle in the township. Today, hundreds of Easterbrook descendants live in the Guelph, Milton and Hamilton areas. The home's historical importance is a great testimony to the founder of Brookville and may be considered a landmark.

Character Defining Elements/Heritage Attributes

Key attributes that reflect the cultural heritage value of the property include:

- The massing of the two-storey rectangular five-bay random stone building with quoins, side and rear wings, and a partial stone basement.
- The low-pitched gable asphalt roof features projecting eaves, verges, plain frieze and moulded wood soffits.
- Three stone chimneys with double flues
- 2 sashes, 12 over 8 windows with stone voussoirs, lug sills and plain trims at the upper floor of the Northeast and Southeast elevation
- 2 sashes, 12 over 12 windows with interior shutters, stone lintels, lug sills and plain trims at the main floor of the Northeast elevation
- Single sash, 6 panels, basement windows with stone voussoirs and plain trims at the Northeast elevation
- Basement six-panel windows with stone lintels, voussoirs, lug sills, and plain trims.
- The semi-circular, 2 sashes, 6 over 6 windows with multi lights transom, stone voussoirs, interior wooden shutters, lug sills and plain trims on the Southwest elevation
- Single sash, four-pane windows with stone lintels, lug sills and plain trims at the Northwest Elevation
- A straight run four-step stone entrance with a stone landing
- A single leaf, neoclassical, eight-panel door with stone voussoirs and a multiple-light transom and Doric piers
- The gable-roof barn features longhand-sawn timber rafters resting on a sturdy stone foundation.
- Historical home of Thomas Easterbrook, founder of Brookville.
- Context of the house in the settlement history of Brookville, as shown in the 1877 Historical Atlas of Halton County.

Cultural Heritage Value or Interest Evaluation

Ontario Regulation 9/06 of the *Ontario Heritage Act* establishes the criteria for determining Cultural Heritage Value of Heritage Resources. A property must have the potential to meet at least two of the criteria to be considered to have heritage significance. These criteria fall into three categories: design or physical value, historical or associative value and contextual value. The following table considers and evaluates the subject property against these criteria.

Table 6: Evaluation of the Cultural Heritage Value of 11374 Guelph Line_ Thomas Easterbrook House

The property has design value or physical value because it,		
	Criteria	Evaluation
i	is a rare, unique, representative or early example of a style, type, expression, material or construction method	Yes, this house is a good example of an elegant two-storey Georgian-style stone house that features a symmetrical five-bay rectangular plan, a random-stone exterior accented by quoins, side and rear wings, and a partially exposed stone basement.
ii	displays a high degree of craftsmanship or artistic merit	No
iii	demonstrates a high degree of technical or scientific achievement	No, the property does not demonstrate a high degree of technical or scientific achievement.
The property has historical value or associative value because it,		
i	has direct associations with a theme, event, belief, person, activity, organization or institution that is significant to a community,	Yes, it is the historical home of Thomas Easterbrook, founder of Brookville.
ii	Yields or has the potential to yield, information that contributes to an understanding of a community or culture	Yes, it provides historical information on Haltonville's settlement history, as shown in the 1877 Historical Atlas of Halton County.
iii	demonstrates or reflects the work or ideas of an architect,	Yes, Thomas Easterbrook, the influential founder of Brookville,

	artist, builder, designer or theorist who is significant to a community	played pivotal roles as the reeve of Nassagaweya, postmaster, and store proprietor.
The property has contextual value because it,		
i	is important in defining, maintaining or supporting the character of an area	Yes, this property contributes to Brookville's heritage character.
ii	is physically, functionally, visually or historically linked to its surroundings	Yes, this property is historically linked to Brookville's development.
iii	is a landmark	Yes, the property is a landmark for Brookville.

Based on the above criteria, the subject property has significant cultural heritage value based on both design and contextual criteria. These attributes are sufficient to warrant Heritage Designation under the *Ontario Heritage Act*. However, designation may not be necessary at this time as the property is current listed on the Municipal Heritage Register, which offers it some protection from demolition.



Appendix 3_Photographic Record _11374 Guelph Line

Aerial View



Legend	
H	Historical
A	Addition





2026 Photos

- Northeast Elevation



Historical

2026 Photos

- Northwest Elevation



Historical

2026 Photos

- Southwest Elevation



2026 Photos

- Southeast Elevation

2026 Photos

Barn_ Northeast Elevation





2026 Photos

Barn_ Southeast Elevation

2026 Photos

Barn_ Southwest Elevation



2026 Photos

Barn_ South Elevation



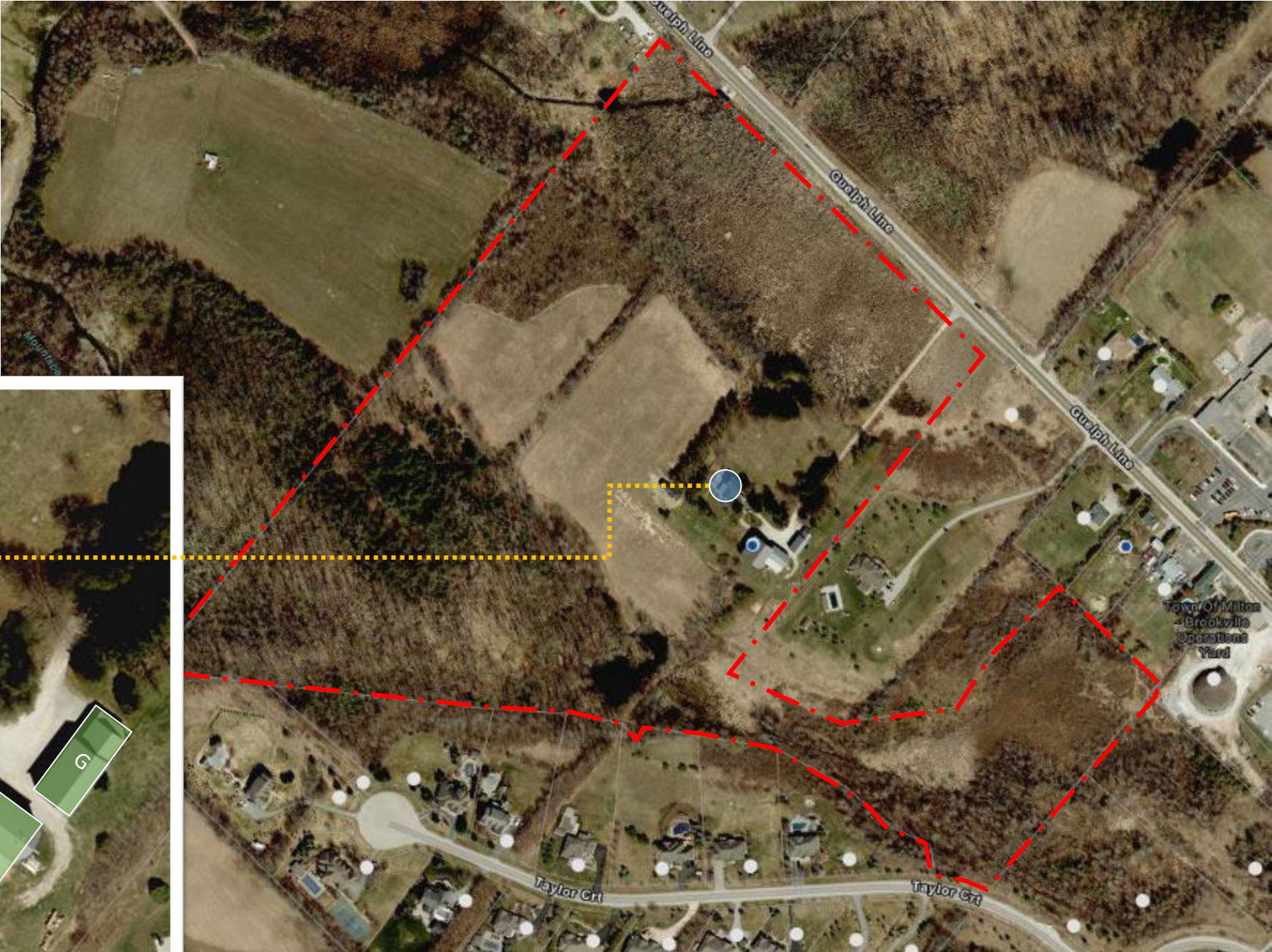


2026 Photos

Barn_ Southeast Elevation

Contextual Heritage Attributes

- CON 3
- PT LOT 18
- 20M984 Blk 20 & 21
- RP 20R2462 Part 2



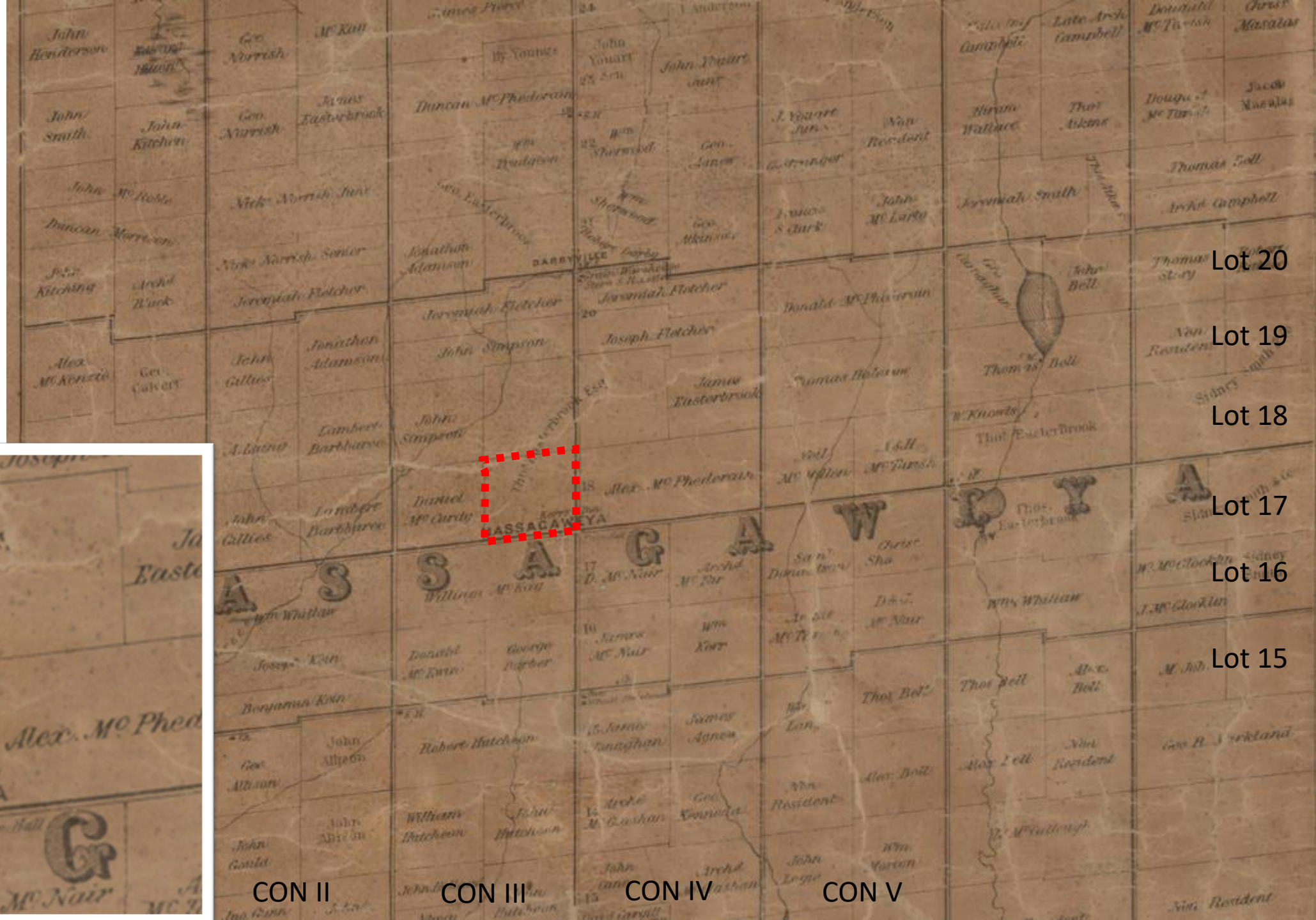
Contextual Attributes

Context of the location of the original house contributing to the heritage character of Haltonville, as shown in the 1858 Tremaine Map

NASSAGAWEYA

CON 3 PT LOT 18

Thomas Easterbrook



Lot 20

Lot 19

Lot 18

Lot 17

Lot 16

Lot 15



CON II

CON III

CON IV

CON V

Contextual Attributes

Context of the location of the original house contributing to the heritage character of Haltonville, as shown in the 1877 Historical Atlas of Halton

NASSAGAWEYA

CON 3 PT LOT 18

Thomas Easterbrook



Lot 20

Lot 19

Lot 18

Lot 17

Lot 16

Lot 15

CON II

CON III

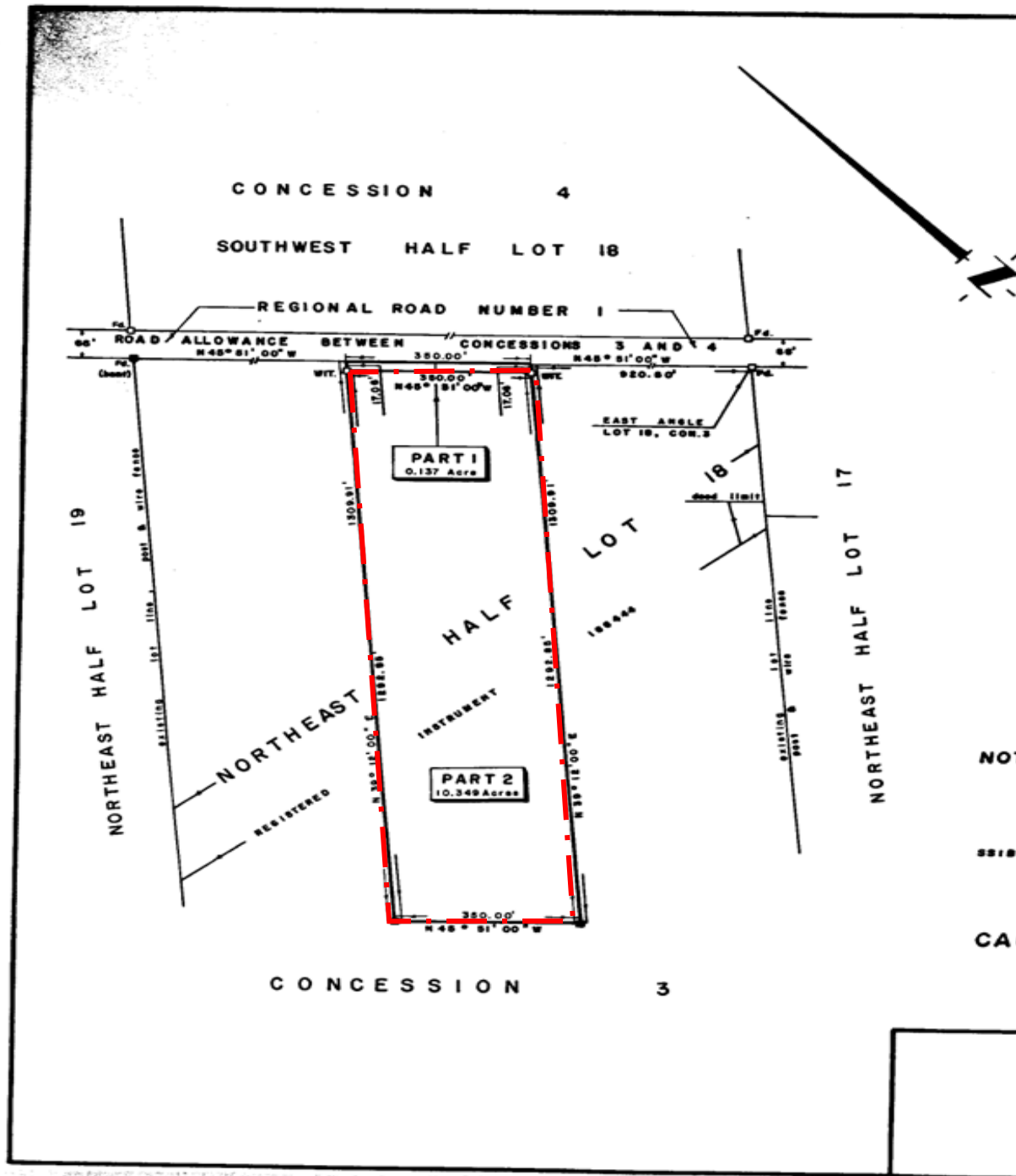
CON IV

CON V

Registered Plan

CON 3
PT LOT 18 RP
20R2462 PART 2

1976



I REQUIRE THIS PLAN TO BE DEPOSITED UNDER PART II OF THE REGISTRY ACT.

RECEIVED AND DEPOSITED AS:
PLAN: 20 R-2462
DATED: JANUARY 26, 1976. DATED: 27 Jan, 1976.

L. Van Harten
L. VAN HARTEN

William J. ...
REGISTRAR FOR THE
REGISTRY DIVISION OF
REGIONAL MUNICIPALITY OF
HALTON NO. 20.

REFERENCE PLAN
ON PART OF
THE NORTHEAST HALF OF LOT 18
CONCESSION 3
TOWN OF MILTON
(FORMERLY TOWNSHIP OF MASSAGAWEYA)
REGIONAL MUNICIPALITY OF HALTON

SCALE: 1 Inch = 200 Feet
1976

SURVEYOR'S CERTIFICATE:

- I HEREBY CERTIFY THAT:
1. THIS SURVEY AND PLAN ARE CORRECT AND IN ACCORDANCE WITH THE SURVEYS ACT AND THE REGISTRY ACT AND THE REGULATIONS MADE THEREUNDER.
 2. THIS SURVEY WAS COMPLETED ON THE 26th DAY OF JANUARY, 1976.
- DATED: JAN. 26, 1976.

L. Van Harten
L. VAN HARTEN
ONTARIO LAND SURVEYOR

NOTE: BEARINGS ARE ASTRONOMIC, DERIVED FROM OBSERVATIONS OF THE SUN AND ARE REFERRED TO THE MERIDIAN THROUGH THE NORTHERLY ANGLE OF THE TOWNSHIP OF MASSAGAWEYA.

- ⊕ DENOTES 1" X 1" X 48" STANDARD IRON BAR SET
- SSIB ⊕ DENOTES 1" X 1" X 24" SHORT STANDARD IRON BAR SET
- ⊕ DENOTES 5/8" X 5/8" X 24" IRON BAR SET
- ⊕ DENOTES 1" DIAM. IRON TUBE
- FD. DENOTES FOUND

CAUTION:
THIS PLAN IS NOT A PLAN OF SUBDIVISION WITHIN THE MEANING OF SECTIONS 29, 32 OR 33 OF THE PLANNING ACT.

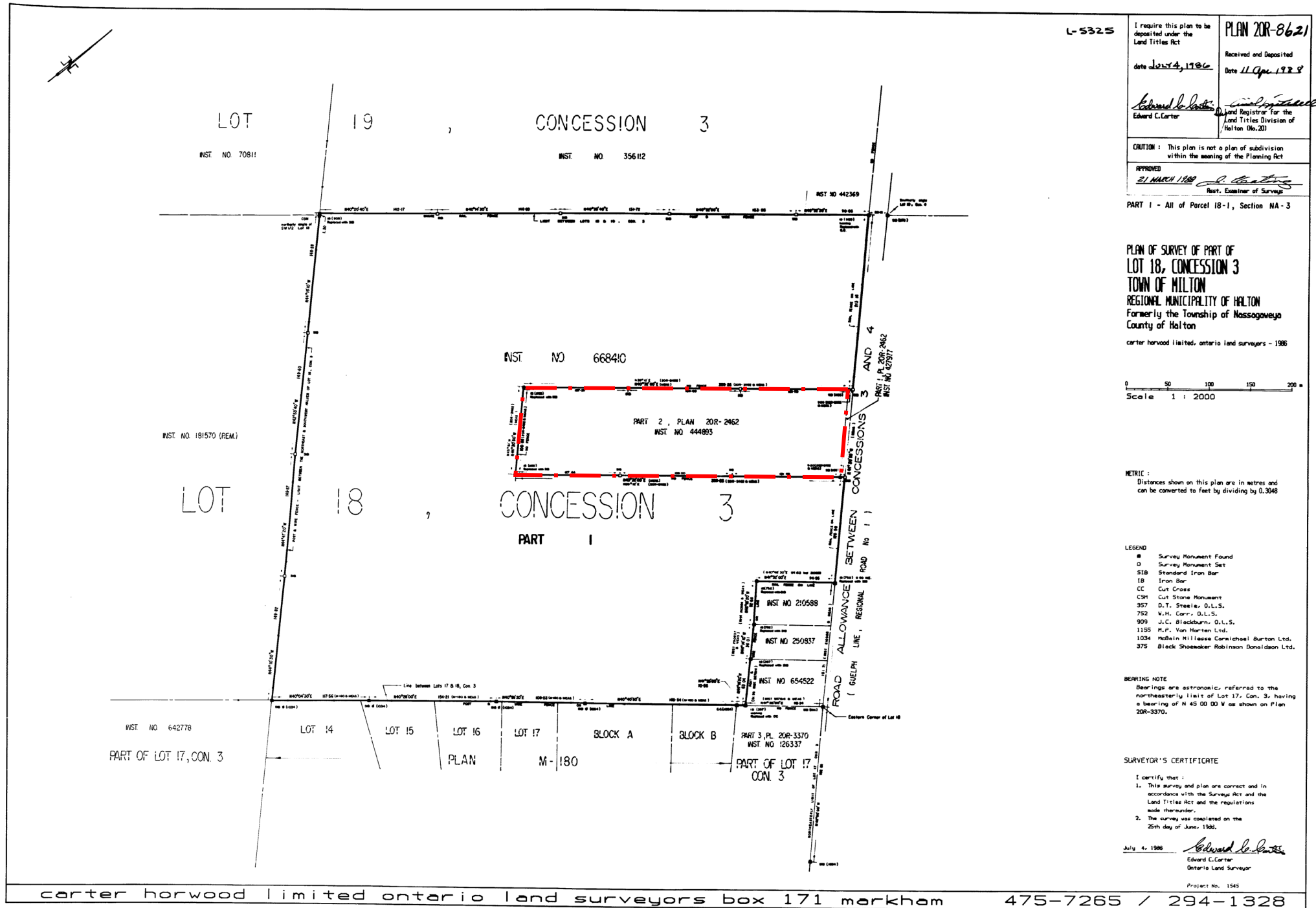
SEAL	M. P. VAN HARTEN LIMITED ONTARIO LAND SURVEYORS	PER: <i>L. Van Harten</i> L. VAN HARTEN JANUARY 26, 1976.
	FOR: MR. & MRS. P. REDGRAVE	
	423 WOOLWICH STREET GUELPH - ONTARIO PHONE: 821-2763	MJ 75-240

Registered Plan

RP 20R8621

Part 2

1988



L-5325

I require this plan to be deposited under the Land Titles Act

PLAN 20R-8621

Received and Deposited

Date 25th June 1988

Date 11 Apr 1988

Edward C. Carter
Edward C. Carter
Land Registrar for the Land Titles Division of Halton (No. 20)

CAUTION: This plan is not a plan of subdivision within the meaning of the Planning Act

APPROVED

21 MARCH 1988 *E. Carter*
E. Carter
Reg. Examiner of Surveys

PART 1 - All of Parcel 18-1, Section NA-3

PLAN OF SURVEY OF PART OF LOT 18, CONCESSION 3 TOWN OF MILTON REGIONAL MUNICIPALITY OF HALTON Formerly the Township of Nassogoweys County of Halton

carter horwood limited, ontario land surveyors - 1988

Scale 1 : 2000

METRIC: Distances shown on this plan are in metres and can be converted to feet by dividing by 0.3048

- LEGEND
- # Survey Monument Found
 - o Survey Monument Set
 - SIB Standard Iron Bar
 - IB Iron Bar
 - CC Cut Cross
 - CSM Cut Stone Monument
 - 357 D.T. Steele, D.L.S.
 - 752 W.H. Carr, D.L.S.
 - 909 J.C. Blackburn, D.L.S.
 - 1155 H.P. Van Herten Ltd.
 - 1034 McBain Millasee Cornicheal Burton Ltd.
 - 375 Black Shoemaker Robinson Donaldson Ltd.

BEARING NOTE

Bearings are astronomic, referred to the northeasterly limit of Lot 17, Con. 3, having a bearing of N 45 00 00 W as shown on Plan 20R-3370.

SURVEYOR'S CERTIFICATE

I certify that:

1. This survey and plan are correct and in accordance with the Survey Act and the Land Titles Act and the regulations made thereunder.
2. The survey was completed on the 25th day of June, 1988.

July 4, 1988 *Edward C. Carter*
Edward C. Carter
Ontario Land Surveyor

Project No. 1545

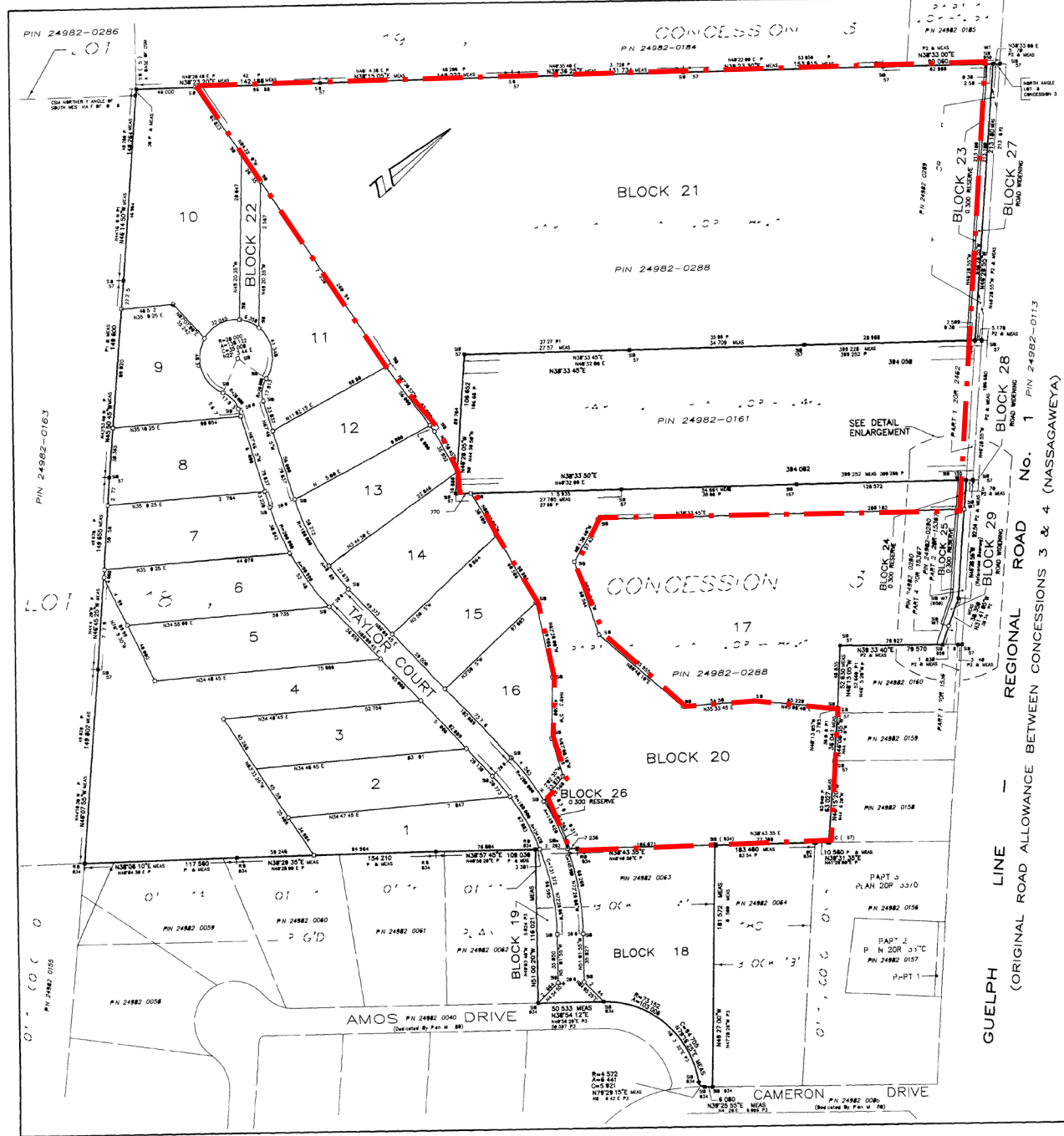
Registered Plan

RP 20R 8621
Block 20, 21

and

RP 20R8621
Part 2

2007

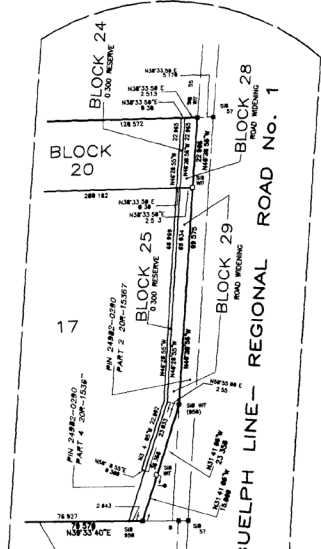


Planning Approval
APPROVED UNDER SECTION 51 OF THE PLANNING ACT RSO 1990 AS AMENDED BY THE 2006 PLANNING ACT AND THE REGIONAL MUNICIPALITY OF HALTON
THIS 27th DAY OF September 2006
[Signature]
PLANNING OFFICIAL
REGIONAL MUNICIPALITY OF HALTON
(Authority granted by By-Law 184-01)

WESTCHESTER ESTATES
PLAN OF SUBDIVISION
PART OF NORTH EAST ONE HALF OF LOT 18
CONCESSION 3
(GEOGRAPHIC TOWNSHIP OF MASSAGAWAYA)
AND BLOCK 'A'
REGISTERED PLAN M-180
TOWN OF MILTON
REGIONAL MUNICIPALITY OF HALTON

SCALE 1 1500
VAN HARTEN SURVEYING INC

LOT/BLOCK	RADIUS	ARC	CHORD	BEARING
1	180.000	47.710	46.878	N79°23'24"W
2	180.000	50.770	49.782	N82°28'59"E
3	200.000	57.148	52.000	N82°27'05"W
4	200.000	58.843	54.781	N77°20'00"E
5	200.000	17.813	17.321	N83°34'10"E
6	280.000	48.371	42.577	N88°25'35"E
7	280.000	52.044	45.224	N11°40'40"E
8	280.000	47.348	37.892	N45°40'50"W
9	200.000	17.813	17.321	N45°08'40"E
10	180.000	58.212	57.829	N77°02'10"W
11	180.000	53.618	53.683	N88°04'00"E
12	200.000	41.583	41.488	N87°53'25"E
13	200.000	46.248	45.946	N87°53'25"E
14	180.000	65.856	65.177	N87°53'25"E
15	200.000	41.838	41.742	N79°58'40"W
16	200.000	41.838	41.742	N79°58'40"W
17	200.000	41.583	41.488	N79°58'40"W
18	200.000	41.838	41.742	N79°58'40"W



CERTIFICATE OF REGISTRATION
PLAN 20M- 984
I CERTIFY THAT THIS PLAN IS REGISTERED IN THE LAND REGISTRY OFFICE FOR THE LAND TITLES DIVISION OF HALTON (N 20) AT 11:27 O'CLOCK ON THE 28th DAY OF SEPT 2006 AND ENTERED IN THE PARCEL REGISTERS FOR PROPERTY IDENTIFIER ALL OF PINS 24982-0063 AND 24982-0288 AND THE REQUIRED CONSENTS ARE REGISTERED AS PLAN DOCUMENT No. H.B.514.634
Cathy Jefferson
A LAND REGISTRAR

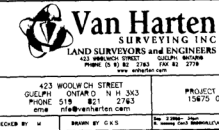
THIS PLAN COMPRISES ALL OF PINS 24982-0063 AND 24982-0288
OWNER'S CERTIFICATE
THIS IS TO CERTIFY THAT
1. LOTS 1 TO 17 BOTH INCLUDE BLOCKS 18 TO 22 BOTH INCLUDE THE 0.300 RESERVE NAMED BLOCKS 23, 24, 25 AND 26 THE ROAD NAMED BLOCKS 27, 28 AND 29 AND THE STREET NAMED 'TA' HAS BEEN Laid OUT IN ACCORDANCE WITH MY INSTRUCTIONS
2. THE STREET NAMED 'TAYLOR COURT' IS HEREBY DEDICATED TO THE CORPORATION OF THE TOWN OF MILTON AS PUBLIC HIGHWAY THE ROAD WIDTHS NAMED BLOCKS 27, 28 AND 29 ARE DEDICATED TO THE REGIONAL MUNICIPALITY OF HALTON AS PUBLIC HIGHWAY
CHARLESTON HOMES LTD
[Signature]
CHARLIE KUIKEN
HAVE THE AUTHORITY TO BIND THE CORPORATION

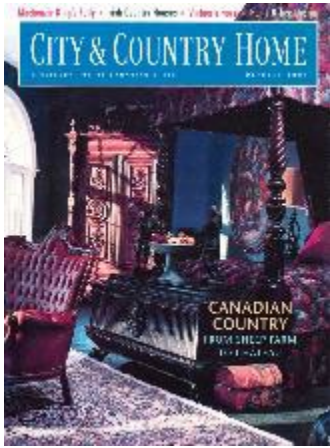
DATE SEPTEMBER 12 2006
SURVEYOR'S CERTIFICATE
I CERTIFY THAT
1. THIS SURVEY AND PLAN ARE CORRECT AND IN ACCORDANCE WITH THE SURVEY ACT, THE SURVEYOR'S ACT AND THE LAND TITLES ACT AND THE REGULATIONS MADE UNDER THEM
2. THE SURVEY WAS COMPLETED ON THE 18th DAY OF OCTOBER 2006
DATE SEPTEMBER 12 2006
JAMES M. LAWS
CHARTERED LAND SURVEYOR

NOTES:
1. BEARINGS ARE GRID AND REFERRED TO THE WESTERLY LIMIT OF GUELPH LINE AS OUTLINED ON PLAN 20R 15847 AND RELATED TO HALTON CONTROL STATIONS 802.50, 802.52, BEING NAD 83 & UTM ZONE 17 CENTRAL MERIDIAN #1 WEST LONGITUDE HAVING A BEARING OF N46°08'57"W
2. ALL BARS ARE 'W' UNLESS OTHERWISE NOTED
3. ALL BARS ARE 'B' UNLESS OTHERWISE NOTED

METRIC.
DISTANCES SHOWN ON THIS PLAN ARE IN METRES AND CAN BE CONVERTED TO FEET BY DIVIDING BY 0.3048

LEGEND.
-D- DENOTES 015 x 015 x 0.80 SURVEY MONUMENT SET
-S- DENOTES SURVEY MONUMENT FOUND
-SB- DENOTES 1025 x 1025 x 0.80 STANDARD IRON BAR
-O15- DENOTES 015 x 015 x 0.80 IRON BAR
-S1155- DENOTES 1155 x 1155 x 0.80 STANDARD IRON BAR
-VH & 1155- DENOTES VAN HARTEN SURVEYING INC
-S1155- DENOTES S1155 x 1155 x 0.80 IRON BAR
-O15- DENOTES 015 x 015 x 0.80 IRON BAR
-P1- DENOTES PLAN 20R-8821
-P2- DENOTES PLAN 20R-8821
-P3- DENOTES PLAN M-180
-O15- DENOTES 015 x 015 x 0.80 IRON BAR
-CSM- CONCRETE STONE MONUMENT





Source:

City and Country Home Magazine
October 1994
Pages 26-29

Article

Williams' Burg

By Katharine Vansittart



PHOTOGRAPHY DANIEL DUTKA



Above, top: Built in 1835, the original stone house sits on four hectares of lawn, field and pine forest. Above: The McLaughlin buggy, circa 1890. Below: At the side entrance, a Palladian-style door juxtaposes rustic stone walls and a pine washstand.



Right: Canadians and pine furniture prevail in the family room at the back of the house. When the Williamses came, the pine staircase was hidden by paneling, the stone walls were plastered and the fireplace was bricked over. Window sills display crockery and tools found during renovation.

Williams' Burg

BY KATHARINE VANSITTART

James and Mary Lynn Williams's move from the city to the country was literally a classic case of putting the cart before the horse. Twenty years ago, browsing through an Ottawa antique store, they came across a McLaughlin buggy, circa 1890. One thing led to another and the purchase of the cart was followed by the acquisition of a horse, and before the couple knew it, they were looking for a farm. A fateful drive down a country road 45 minutes west of Toronto led Mary Lynn Williams to a slowly, but dilapidated, stone house on a four-hectare estate. The property wasn't on the market, but her keen intuition plus a little digging around in the local real estate office revealed that the house was indeed for sale. Today, after 18 years of restoration, the lion's share of which they did themselves and for which they recently won a local award, the Williamses have their dream home, and a place to park their carts and horses to boot.

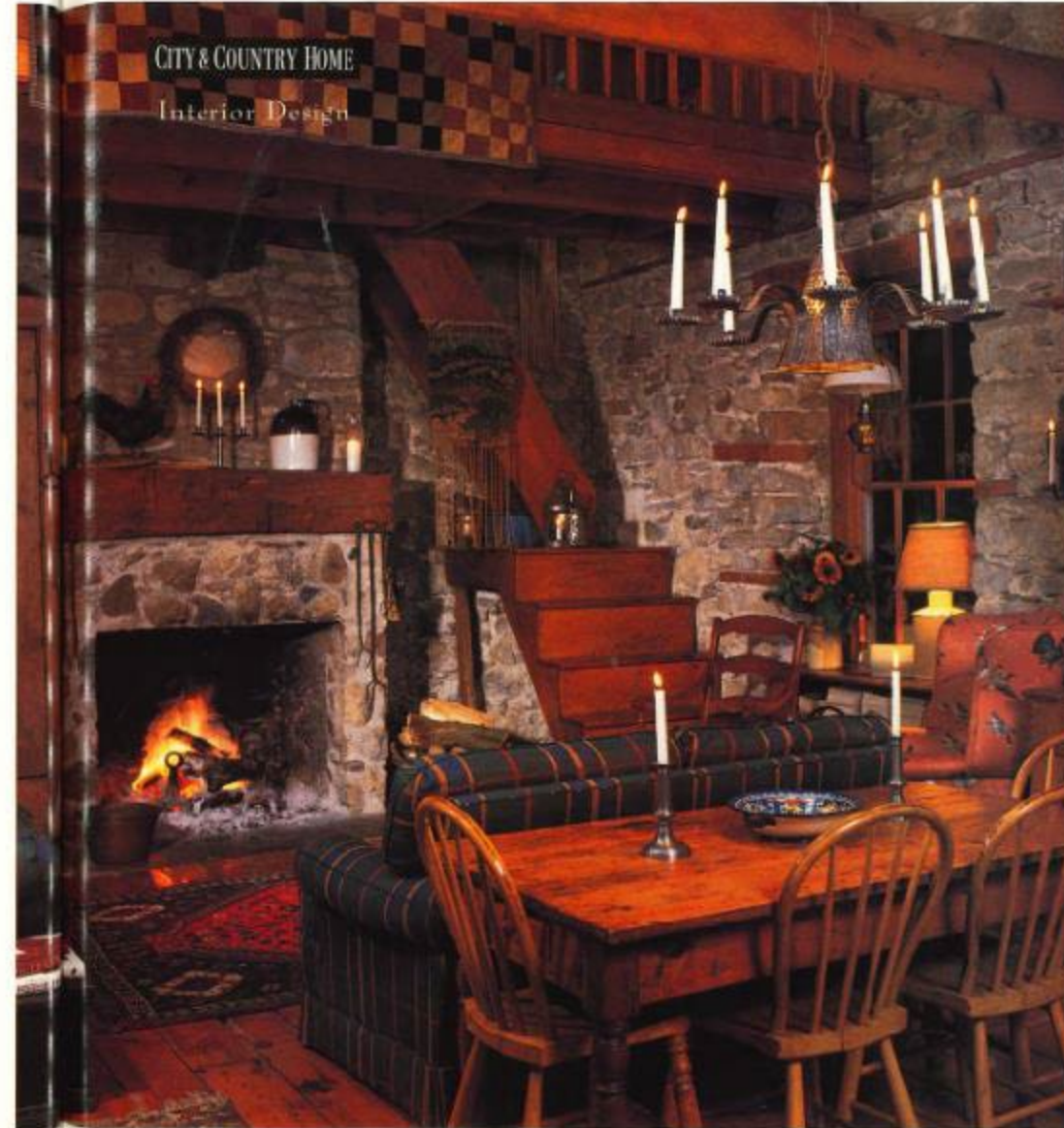
"When I first walked into the house, it was in a terrible state," says Mary Lynn Williams, "but I could see the potential to turn it into a grand old home again." Built in 1835, the original manor house became an inn in the 1850s for 20 years, then a working farm until the 1940s. In the 1950s, a Toronto couple purchased the house for a weekend retreat. Ten years later, another family restored it to a full-time residence.

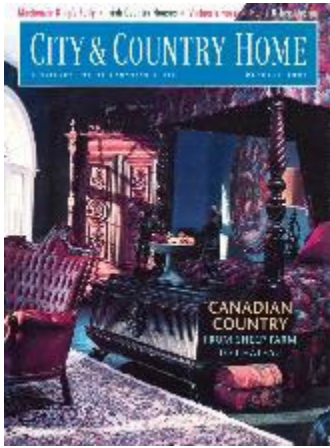
All five incarnations were evident when the Williamses and their two young sons, Abe, now 22, and Josh, 18, moved in in 1976. Signs of past times were revealed by the layers of flooring and wallpaper, by the old coins and calling cards found in nooks and crannies, by the china, cutlery and tools unearthed in the soil around the house. All the interior stone walls were covered in plaster. A pine staircase was concealed behind paneling, fireplaces were bricked over, original wood cabinetry

boarded up "and you could see through the roof," says Mary Lynn Williams. Returning the grande dame to her original grace was mostly a matter of peeling back the layers and restoring the original elements. "But we didn't want to live in a museum," Williams says. To that effect, such modern amenities as a whirlpool and heated floors in the sunroom have been introduced.

The given, however, were a beautiful stone shell, six fireplaces, deep-silled sash windows and pine floors that just needed to be rescued

Putting the cart before the horse leads Mary Lynn and James Williams to life in the country





Source:

City and Country Home Magazine
October 1994
Pages 26-29

Article

Williams' Burg

By Katharine Vansittart



In the master bedroom in the former carriage house, vintage linens cover a bed with a headboard made from the back of an antique sofa. The Persian carpet is from Adourian's Rug Galleries Limited, Toronto.



Upper left: Mary Lynn and James Williams with their golden lab, Hogan.



Left: Document wallpaper from Colonial Williamsburg, and an assortment of mahogany and cherry antiques, purchased separately from auctions and shops, maintain a period ambience in the dining room.

Williams' Burg

Returning the grande dame to her

from layers of old carpet, linoleum and planks. It was like an archaeological dig, recalls Mary Lynn Williams. "It took James four months just to remove all the plaster from the stone, but we were really ambitious back then," she says. "I would never do it again."

The house lends itself to elegant and easygoing decoration. In the adjacent front living and dining rooms, the walls have been replastered and papered with document wallpaper from Colonial Williamsburg to retain a traditional mood in this formal portion of the house. Drapery swags are tailored to frame windows but preserve the views. For privacy, original wood shutters can be drawn inside and out. These front rooms have been furnished with fine 19th-century antiques and porcelain figures and heirloom silver from Mary Lynn Williams's grandmother. The more personal spaces at the back of the house, the master bedroom, family room and side entrance hall, enjoy the rural simplicity of exposed stone walls and wood floors. Canadian pine and wicker furniture prevail, with rustic accessories such as antlers, cranks, milk cans and tools, many of which were discovered during construction or while cultivating the garden.

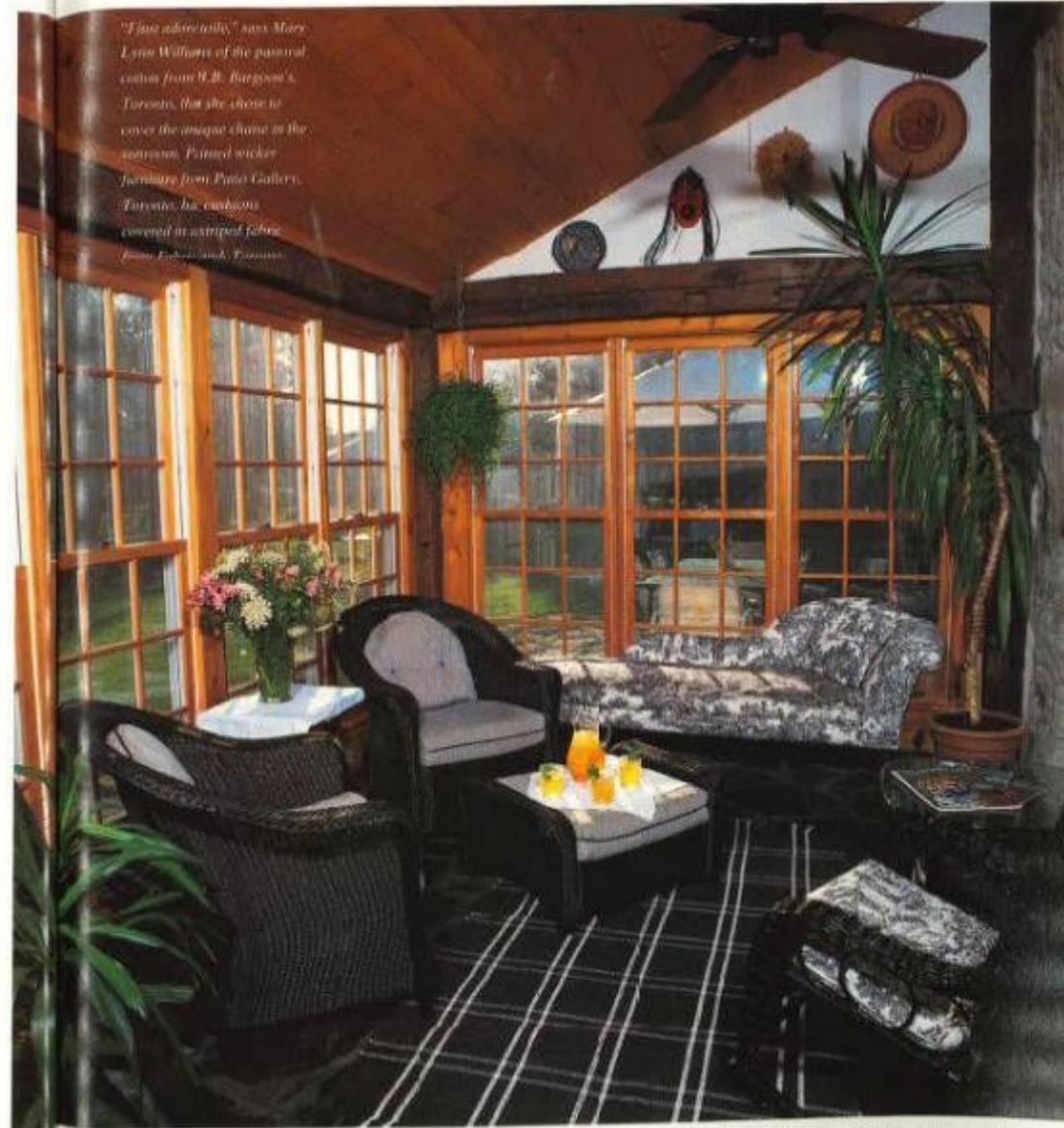
"Stone has so much character," says Mary Lynn Williams. "It's like a work of art." For that reason many of the walls remain unadorned. The few works that are hung include a series of indentures from the original builders, coins dating from 1806 found during construction and a ticket to a local church reunion, December 26, 1877.

Over the years the Williamses have allowed their home to take shape organically. "It wasn't that we moved in and knew exactly what we wanted to do. We have lived here so long that it has just evolved," Mary Lynn Williams explains. The last

major project: turned the carriage house into their master bedroom, followed by the addition of the sunroom in 1990.

"As horrible as it was," recalls Mary Lynn Williams of the house before their restoration, "the house was welcoming. There was a definite presence—never threatening but certainly we felt it. It's almost as if there were a guide overseeing everything, and now that we're finished, it's happy." Now that the dust has settled, the same may be said for the Williamses. ●

original grace was mostly a matter of peeling back the layers and restoring the original elements



"Just adorably," says Mary Lynn Williams of the pastoral ceiling from N.B. Burgess's Toronto, but she chose to cover the original stone in the sunroom. Painted wicker furniture from Pina Gallery, Toronto, has cushions covered in striped fabric from Eckhardt, Toronto.



Source:

**Century Home
Magazine**

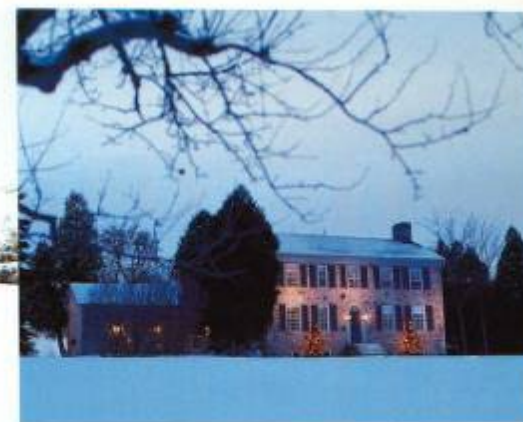
Nov-Dec 1998
edition

Pages 52-57

Article

**A Stone for all
Seasons**

Cover story



A STONE *for all Seasons*

HOLIDAY CELEBRATIONS ADD HIGHLIGHTS TO THE
MANY HAPPY FAMILY TIMES SPENT IN THIS
EARLY FARMHOUSE.

COVER STORY

Vintage stone houses tend to have an almost universal appeal. With a natural grace that relates them to the surrounding land, they offer a steadiness that calms the soul. Even the most dilapidated old stone carries a sense of romance and when you come across a well-cared-for beautiful home decorated in seasonal splendour,

it's no wonder passers-by stop in awe.

The Williams' stone farmhouse, on the western border of the greater Toronto area, draws admiring glances throughout the year, as well as during the holidays. "Although I could see the potential in the old house when we first saw it over twenty years ago, many others couldn't. My mother was just slightly horrified that her daughter

Decorated for Christmas, this c.1835 stone house presents a warm welcome to visitors on a snowy evening. To the left is the former coach house, now master bedroom.

The Williams, Mary Lynn, James, sons Abe, Josh and pet Hogan enjoy a snowy walk about the family property.

The fieldstone house has a stone tall wing that houses the keeping room, a favourite seating and dining area, particularly at family holiday times. Ready for another special get together, the old eleven foot work table found in the basement twenty odd years ago, has seen yeoman service. Christmas grocery and a warming fire are too great an invitation to resist.



A STONE *for all Seasons*

with young babies was going to live in what obviously was going to become a construction site," recalls Mary Lynn.

"I've always had this instinct to live in an old house. I really don't know why. As a child, my parents didn't live with old houses and antiques, but it was what I wanted. I'm lucky I had a talented husband that fit in perfectly with my dream and was quite willing to go along," laughs Mary Lynn. "Jim took on most of the work himself initially, in his spare time, since working at a family business kept him fully occupied."

The Williams' babies are now

adults and off on their own. Jim and Mary Lynn will be interested to see what choices Abe, now 26, and Josh, 22, will make after their early experience of growing up in the country in a special old dwelling.

The house, set back from the road on a rise of land, consists of first and second floors, a full basement, and wings to the tail and to the side. It boasts six fireplaces, a wonderful complement to a cozy family life, as well as to the holiday season.

The Williams purchased their circa 1835 Georgian style fieldstone farmhouse in 1976. The property, over ten acres, includes a turn-of-the-century

Mary Lynn Williams combines candles with dried and fresh flowers and greenery to cheerfully deck the parlour mantle for the holiday season (also shown on our cover).

Now one large room, the formal parlour was originally two rooms, hence the double fireplaces shown here. A well designed mantel decoratively unites the wall and the smaller of the two fireplaces is now used for wood storage. The room awaits the arrival of Santa.

The serenity and charm of the dining room is enhanced with Mary Lynn's small touches, like





A STONE *for all Seasons*

barr, used when the Williams had horses as part of their lifestyle. Mary Lynn takes full advantage of the many evergreens growing on the acreage when she sets about decorating for the holidays, utilizing cedar, spruce, hemlock, and pine to scent the house and bring in the feel of the fresh, wintry out-of-doors.

After years of planning, building and fixing, the Williams feel very satisfied with the time spent fine tuning their home. Tales of renovation and makeover are still easily recounted, and seem as remarkable as memories of raising their infant sons into young men through it all. For now though,



See page 82 for Shopping Sources

they look forward to the comfort and joy of happy family holidays with their 'stone for all seasons'.*





The exterior side window of the keeping room is now part of an interior hall connecting the stone house to new wings. Santa signed art, sleigh, poinsettia and snowshoes tell us a winter wonderland must be near.



We walked into this house when it needed a lot of care which would have discouraged many people, but I knew immediately that we could make it serene once more.

MAR' LYNN WILLIAMS

Ground Floor Plan

Legend		Construction
	Historical House	1835-1837
	Historical Keeping Room	1835-1837
	Historical Carriage House	1835-1837
	Additions	1990



In 1834, 200 acres were granted to Thomas Easterbrook, who became the first reeve of Nass. He built the first stone house in Nass between 1835 and 1837, originally operating it as a carriage shop with Easterbrook & Stingle. The property was divided into two parcels in 1835. Easterbrook occupied the house until the 1850s. The building appears on the 1877 map and received a heritage award in 1994.

Historical Book

Extract from Halton
County (LRO 20)

Nassagaweya

Book 3

Concession 3

Part Lot 18

Pages 143-148

PRE-PRODUCTION

MICROFILMING SUMMARY SHEET

Land Registry Office I.D.: # 20

Registration Type: R

Municipality: HALTON

Township: NASSAGAWEYA

Book #: 3

Concession: 3

LOT FROM: _____ LOT TO: _____

Filed: JUNE 1999

Extract from Halton County (LRO20) , Con 3 Lot 18 (Pages 143-148) Nassagaweya Plan 20M984 Blks 20 And 21 and RP 20R2462 Part 2								
No	Instrument	Dated	Registered	From	To	Acres	Description	Considerations
	Patent	14 Feb 1834		Crown	John Young	200	All	
210 I	B&Sale	21 May 1834	23 Jan 1835	John Young	Thomas Easterbrook	100	E 1/2	
1202 F	B & S	6 Dec 1876	10 May 1877	Thomas Easterbrook & Wife	James Milne		E 1/2 except 5 acres	\$ 7,200.00
3497 L	B & S	7 Apr 1893	11 Apr 1893	James Milne 7 Wife	David F. Milne & Wife		Part E1/2 with exception	
3545 L	B&Sale	16 Nov 1892	16 Nov 1893	David F. Milne & Wife	James S. Leachman	7/20	E 1/2 with exception	\$ 100.00
3783 L	B&Sale	24 Dec 1895	27 Dec 1895	James S. Leachman 7 Wife	John Henry Milne	7/20	E 1/2 with exception	\$ 1,000.00
	Deed	May 5, 1900	February 6, 1901	John H Milne	Neil McMillan		Part Ely1/2	\$ 102.50
	Deed	May 5, 1900	February 6, 1901	Neil McMillan 7 Wife	James S Leachman	2 rods	Part of Ely together with 1/4 of acre adjoining W/y side of said land with exception 22 3/4 pur.	\$ 270.00
4627 M	B&Sale	July 11, 1902	July 18, 1902	James S Leachman	James S. Inglis & Wife		Part E1/2 10 1/8 pur	\$ 20.00
4628 M	B&Sale	March 22, 1904	March 22, 1904	James S. Inglis & Wife	John Henderson	100	E1/2 with exception	\$ 4,700.00
6369 P	Grant	April 4, 1916	April 7, 1916	John Henderson	David A. Henderson	100	E1/2 with exception	
9585 S	Grant	March 31, 1947	April 3, 1947	David Henderson & Wife	Douglas Howard Turnbull & Mary Eileen Turnbull, his wife		Ely 1/2 or Nely 1/2 except 3 1/2 acres	\$1 & C
10272 S	Grant	April 24, 1952	June 3, 1952	Douglas Howard Turnbull & Mary Eileen Turnbull, his wife	Clare Godwin MacLean & Wife		Ely 1/2 or Nely 1/2 except 3 1/2 acres	Mort and \$6,768
70793	Grant	5 no 1957	November 7, 1957	Clare Godwin MacLean & Maria MacLean Wife		100	Ely 1/2 or Nely 1/2 with exception	\$2 & C
186444	Grant	June 3, 1965	July 9, 1965	Maria MacLean	Helen F. Redgrave	100	Nely 1/2 of Lot with exception	\$2 & C
427977	Grant	January 28, 1976	February 5, 1976	Helen F. Redgrave	Henry O.L. Emerson & Christina J. Emerson		Pt NE1/2 des as Pt 2 on 20R-2462	\$2 & C
444893	Grant	October 18, 1976	November 30, 1976	Henry A.L. Emerson & Christina J. Emerson	James M. & Mary L. Williams		Pt NE1/2 des as Pt 2 on 20R-2462	\$2 & C
848602	Transfer		January 25, 1996	Williams, James McCauley and Williams, Mary Lynn	Williams, Mary Lynn		Pt NE1/2 des as Pt 2 on 20R-2462 (10.349 acres) Tog with R of W (4448931)	

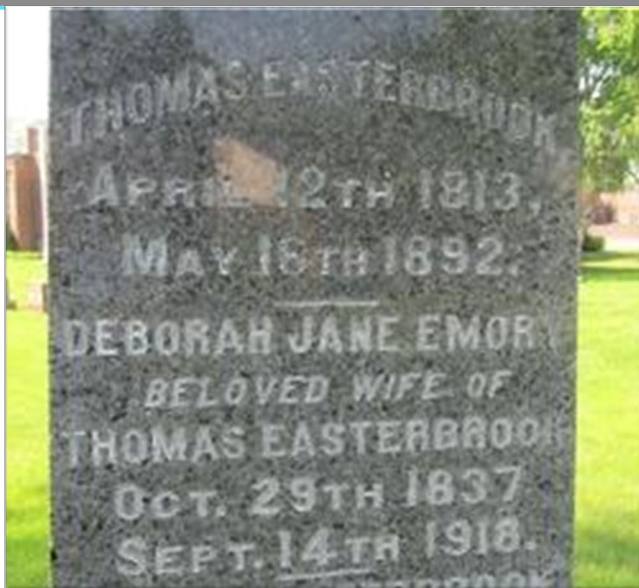
Thomas Easterbrook

BIRTH 12 Apr 1813
Devon, England

DEATH 16 May 1892 (aged 79)
Canada

BURIAL [East Plains Cemetery](#)
Burlington, Halton Regional Municipality, Ontario, Canada

MEMORIAL ID 111538669 · [View Source](#)



Family Members

Parents



[Elias Easterbrook](#)
1781-1858



[Joan Stranger](#)
1781-1861

Siblings



[James Easterbrook](#)
1806-1887



[William Easterbrook](#)
1818-1903



[George Easterbrook](#)
1822-1903

Spouses



[Hannah Youart Easterbrook](#)
1818-1859



[Deborah Jane Emory Easterbrook](#)
1837-1918

Children



[Elizabeth Harriet Easterbrook Norrish](#)
1835-1923



[John Easterbrook](#)
1837-1907



[Mary Ann Easterbrook Coultres](#)
1842-1920



[Jane Easterbrook Peart](#)
1846-1913



[Thomas Foster Easterbrook](#)
1848-1922



[Hannah Maria Easterbrook Fletcher](#)
1851-1914



[Eliza Charlotte Easterbrook](#)
1859-1859



[Ella Joan Easterbrook Job](#)
1864-1943



[Ada Martha Easterbrook](#)
1872-1872



Father of Thomas Easterbrook

Elias Easterbrook

BIRTH 1781
Holne, South Hams District, Devon, England

DEATH 21 Jan 1858 (aged 76-77)
Burlington, Halton Regional Municipality, Ontario, Canada

BURIAL Ebenezer United Church Cemetery
Campbellville, Halton Regional Municipality, Ontario, Canada
[Add to Map](#)

MEMORIAL ID 41738699 · [View Source](#)

Elias Easterbrook
b. 1781, d. 1858



Easterbrook Family Tree

Joan Stranger
b. 1781, d. 1861

James Easterbrook
b. 1806, d. 1887

Elias Easterbrook
b. 1808, d. 1858

John Easterbrook
b. 1811, d. 1895

Thomas Easterbrook
b. 1813, d. 1892

m. (1) Hannah Youart
b. 1818, d. 1859

m. (2) Deborah Emery
b. 1837, d. 1818

Elizabeth Easterbrook
b. 1815, d. 1834

William Easterbrook
b. 1818, d. 1903

George Easterbrook
b. 1822, d. 1903

m. (1) Mary Youart
b. 1825, d. 1856

m. (2) Caroline Darby
b. 1842, d. 1921

Ann Easterbrook
b. 1826, d. 1907

Elizabeth Easterbrook
b. 1835, d. 1923

John Easterbrook
b. 1839, d. 1907

Elias Easterbrook
b. ?, d. 1905

Mary Ann Easterbrook
b. 1844, d. 1920

Jane Easterbrook
b. 1847, d. 1913

Thomas Easterbrook
b. 1848, d. 1922

Hannah Easterbrook
b. 1852, d. 1914

Eliza Easterbrook
b. 1859, d. 1859

Wm. Henry Easterbrook
b. 1861, d. 1941

Ella Easterbrook
b. 1864, d. 1943

Family Members

Spouse



Joan Stranger
1781-1861

Children



James Easterbrook
1806-1887



Thomas Easterbrook
1813-1892



William Easterbrook
1818-1903



George Easterbrook
1822-1903

First Wife of Thomas Easterbrook

Hannah *Youart* Easterbrook

BIRTH	28 Feb 1818 Glaisdale, Scarborough Borough, North Yorkshire, England
DEATH	23 Apr 1859 (aged 41) Halton Regional Municipality, Ontario, Canada
BURIAL	Ebenezer United Church Cemetery Campbellville, Halton Regional Municipality, Ontario, Canada Add to Map
MEMORIAL ID	54762563 · View Source



Family Members

Spouse



Thomas Easterbrook
1813–1892

Children



Elizabeth Harriet *Easterbrook* Norrish
1835–1923



John Easterbrook
1837–1907



Mary Ann *Easterbrook* Coultes
1842–1920



Jane *Easterbrook* Peart
1846–1913



Thomas Foster Easterbrook
1848–1922



Hannah Maria *Easterbrook* Fletcher
1851–1914



Eliza Charlotte Easterbrook
1859–1859

Second Wife of Thomas Easterbrook

Deborah Jane *Emory* Easterbrook

BIRTH	29 Oct 1837 Trafalgar, Halton Regional Municipality, Ontario, Canada
DEATH	14 Sep 1918 (aged 80) Burlington, Halton Regional Municipality, Ontario, Canada
BURIAL	East Plains Cemetery Burlington, Halton Regional Municipality, Ontario, Canada Show Map
MEMORIAL ID	111538820 · View Source



Family Members

Parents

-  Aaron Dunham Emory
1808-1892
-  Ruth *Bridgman* Emory
1808-1846

Siblings

-  Mary E. Emory
1836-1853
-  Harriet *Emory* Lindley
1842-1917
-  Thomas A. Emory
1844-1847

Half Siblings

-  Ethbert Bruce Emory
1849-1915
-  Dr. Cummins Van Norman Emory
1850-1934
-  Rev. Vernon Hope Emory
1853-1920
-  William Arthur Emory
1857-1941
-  Dr. William John Hunter Emory
1861-1939
-  Dinnie Emory
1864-1864
-  Freddie Emory
1866-1866

Spouse

-  Thomas Easterbrook
1813-1892

Children

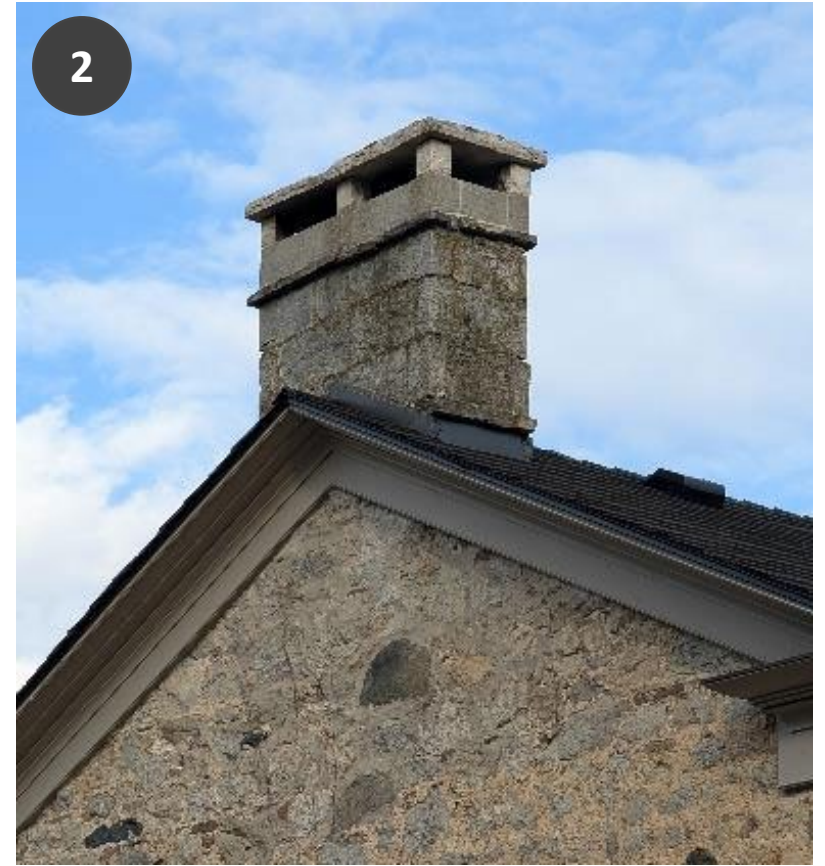
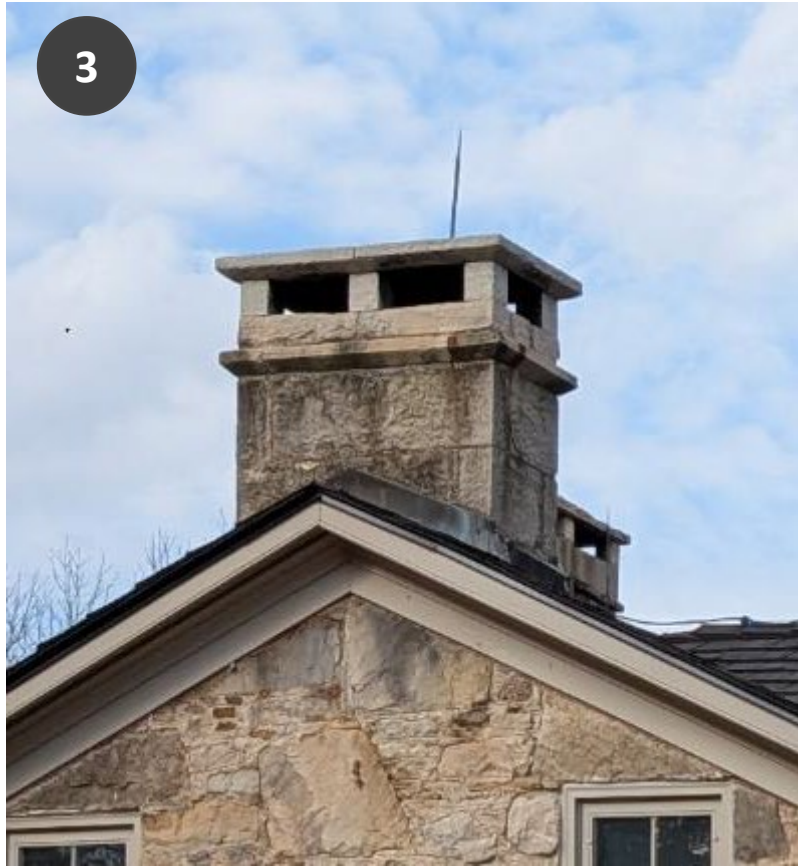
-  Ella Joan *Easterbrook* Job
1864-1943
-  Ada Martha Easterbrook
1872-1872

Physical Attributes

The massing of the two-storey rectangular-shaped five bay random stone building with quoins, side and rear wings and a partial stone basement,

The low gable asphalt roof , projecting eaves, verges, plain frieze and moulded wood soffits.





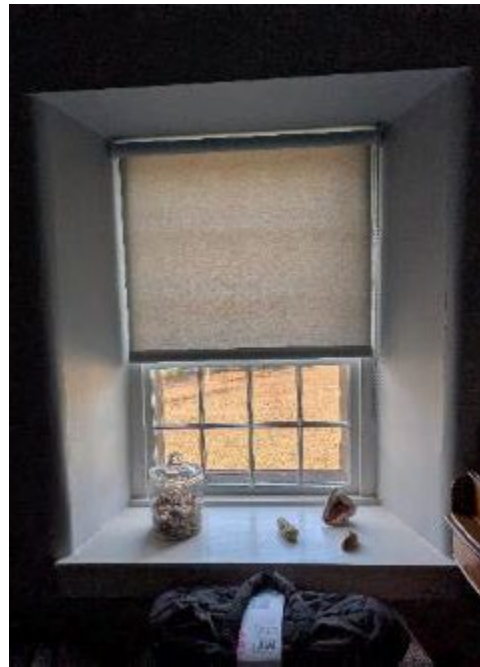
Physical Attributes

Three stone chimneys with double flues

Physical Attributes

2 sashes 12 over 8 windows with stone voussoirs, lug sills and plain trims at the upper floor of the Northeast elevation





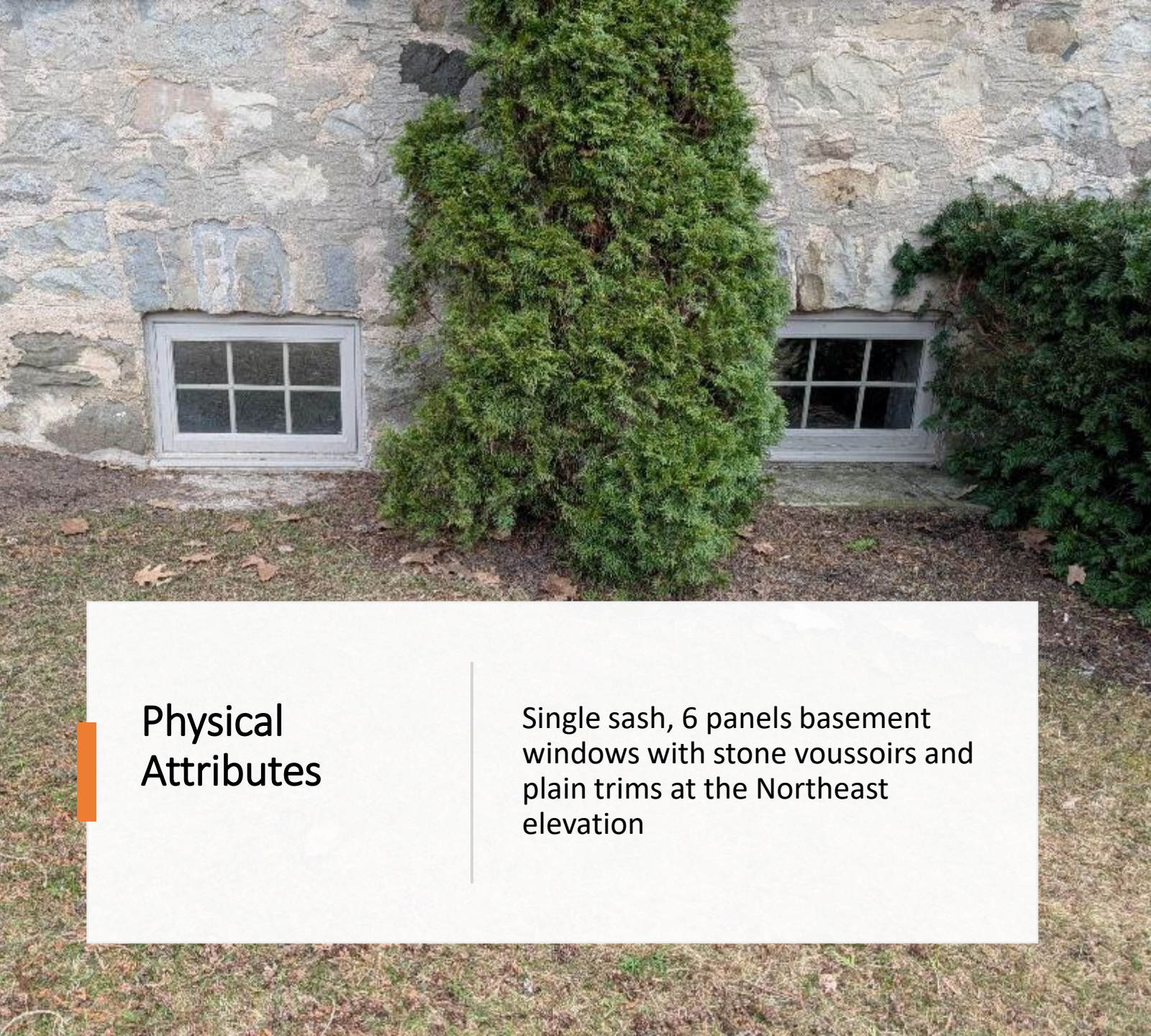
Physical Attributes

Interior view of windows at upper floor



Physical Attributes

2 sashes, 12 over 12 windows with interior shutters, stone lintels, lug sills and plain trims at the main floor of the Northeast elevation



Physical Attributes

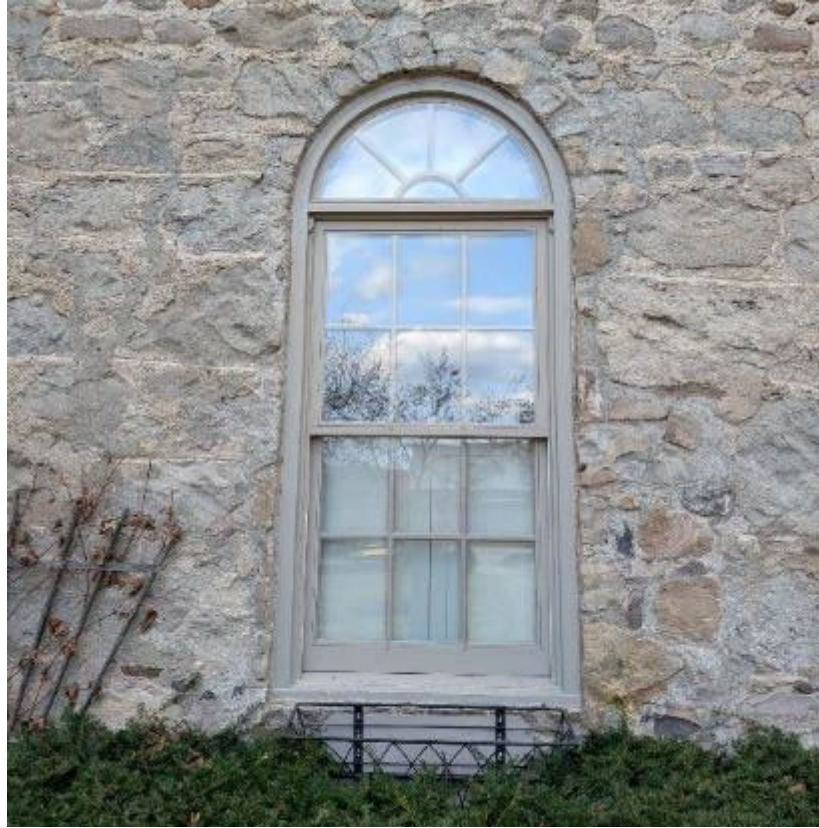
Single sash, 6 panels basement windows with stone voussoirs and plain trims at the Northeast elevation



Physical Attributes

2 sash, 12 over 8 windows with stone lug sills and plain trims on the main floor at the Southwest elevation



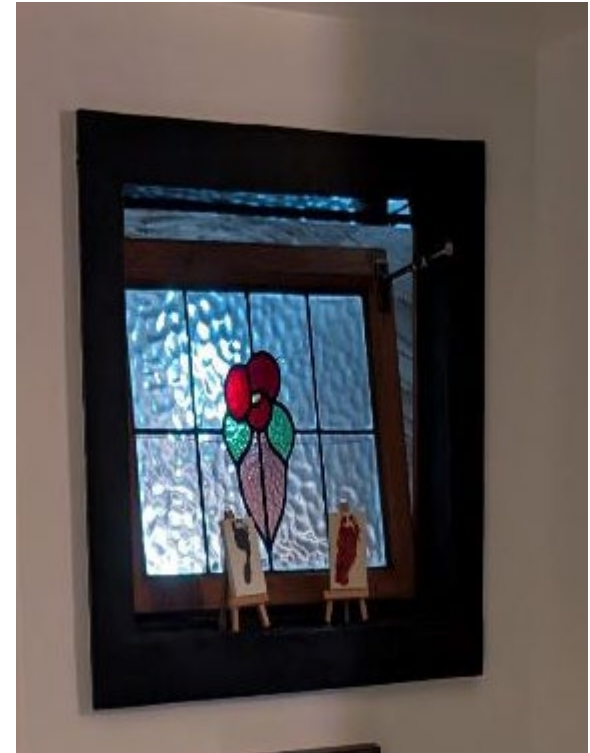


Physical Attributes

- semi-circular, 2 sash, 6 over 6 windows with multi lights transom with stone voussoirs, interior wooden shutters, lug sills and moulded trims on the Southwest elevation

Physical Attributes

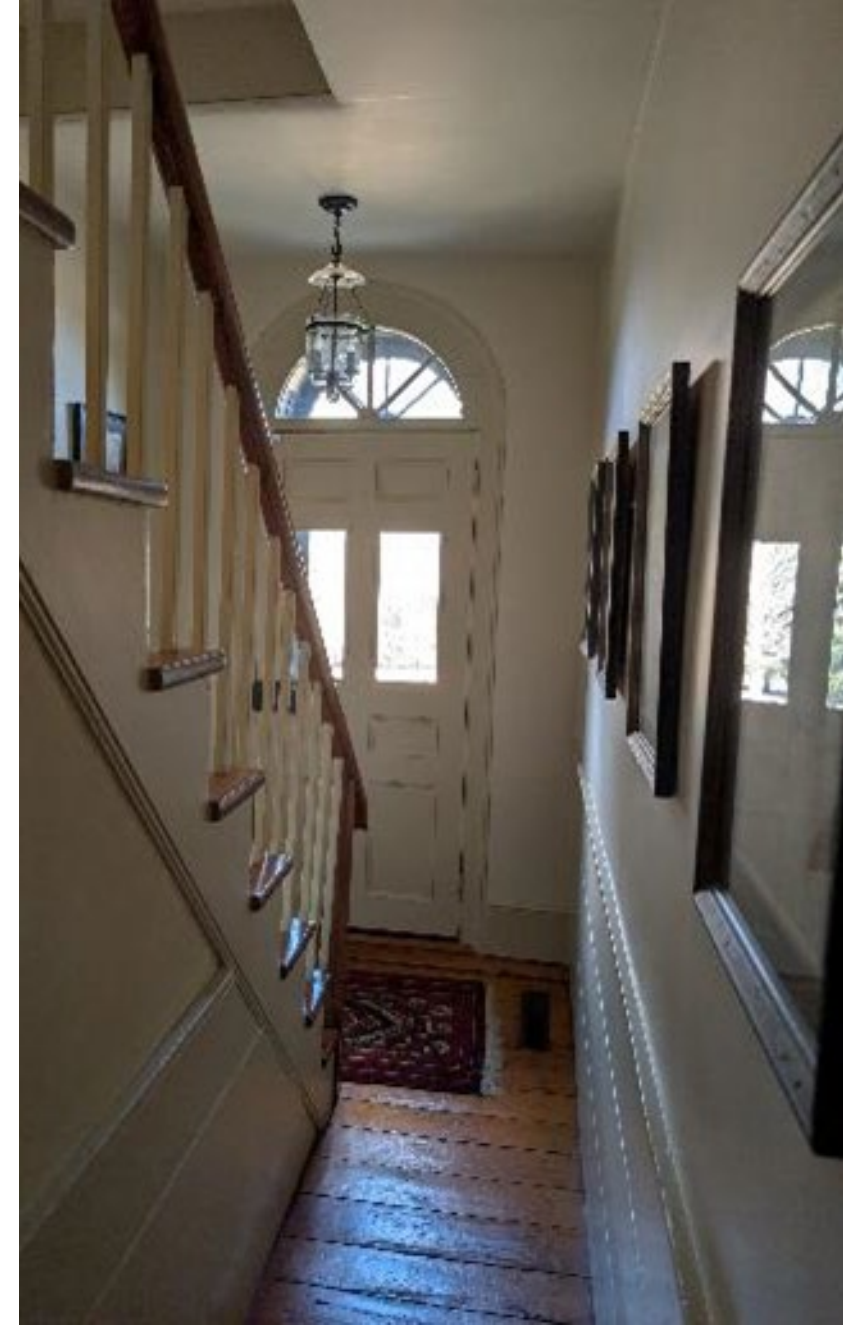
Single sash, Four pane windows with stone lintels, lug sills and plain trims at the Northwest Elevation



Physical Attributes

A straight run four steps stone
entrance with a stone landing





Physical Attributes

- A single leaf, neo classic, eight panels door with stone voussoirs and a multiple light transom and doric piers

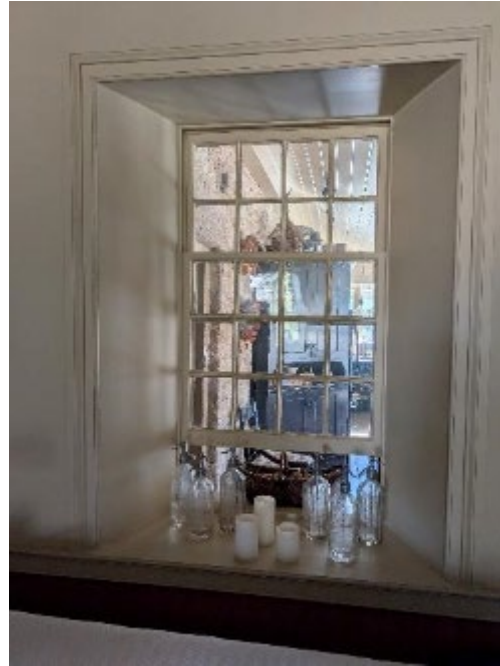


Physical Attributes

The gable-roof barn featuring longhand-sawn timber rafters resting on a sturdy stone foundation



Physical Attributes



Interior Windows of the historic portion of the house were all conserved

**Non-Heritage
Attributes**

New doors to additions



2026 Photo

Non-Heritage Attributes

Four Season Pergola





2026 Photo

Non-Heritage Attributes

Detached Garage

Original Deeds of Property





2026 Photos

Historical Parlour or Dinning room



2026 Photos
Kitchen Extension





2026 Photos Historic Keeping Room

2026 Photos

Random Stone Wall Interior





2026 Photos
Sunroom Extension

2026 Photos

Copper Pennies found on property

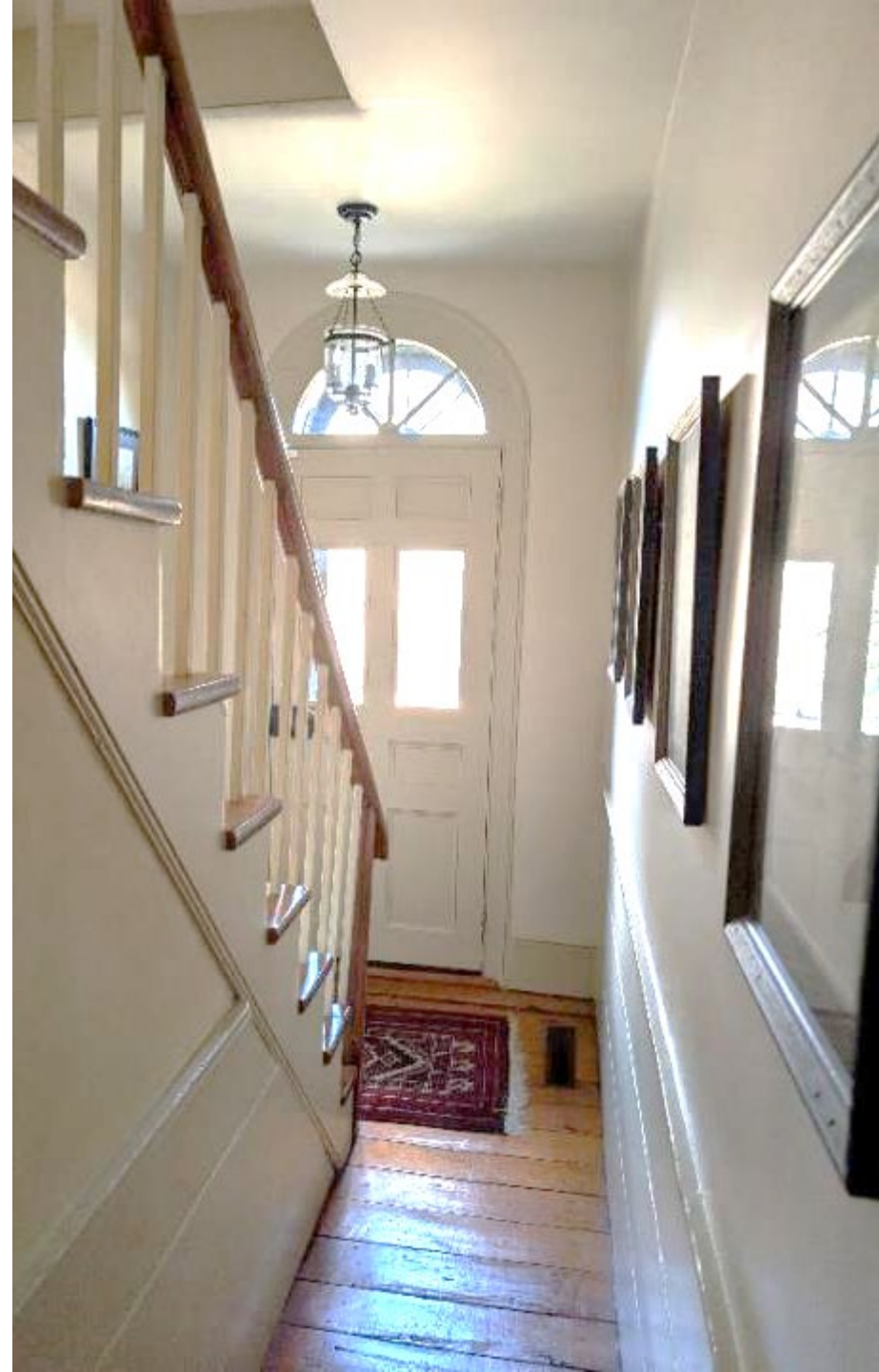




Fireplaces



2026 Photos
Interior stairs



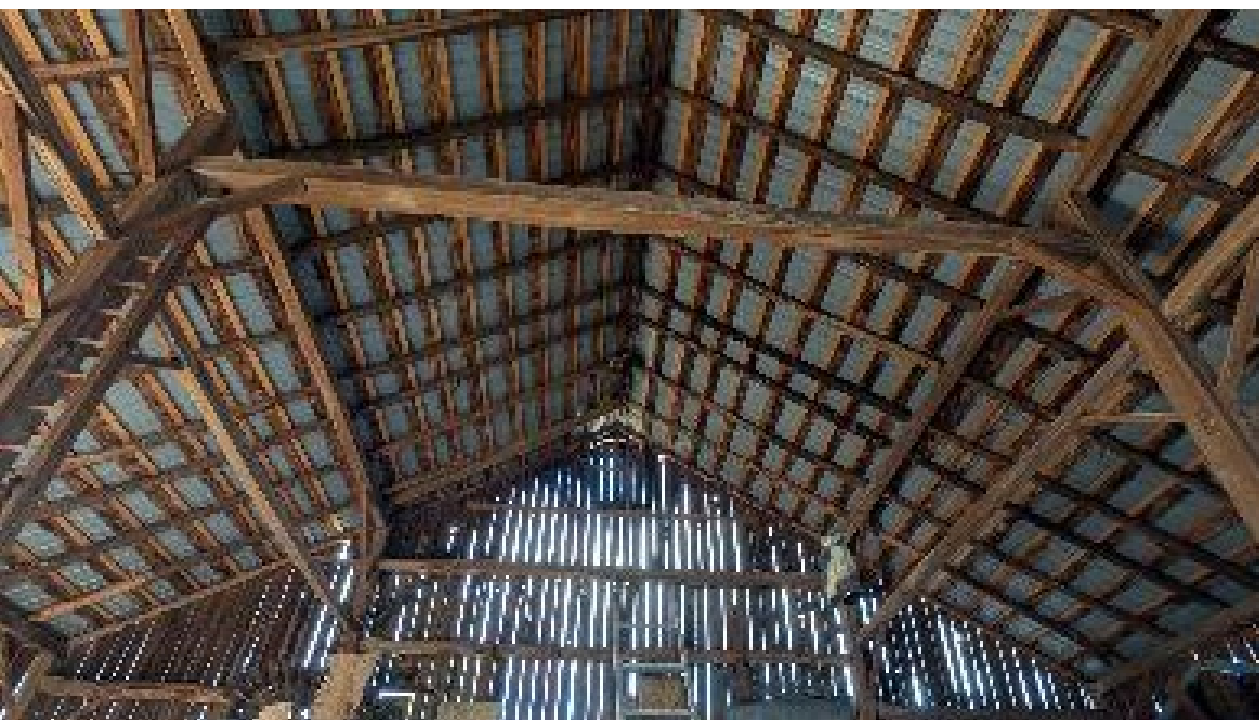
2026 Photos _Historic Carriage House Interior



2026 Photos

Hall





2026 Photos

Barn



2026 Photos

Barn

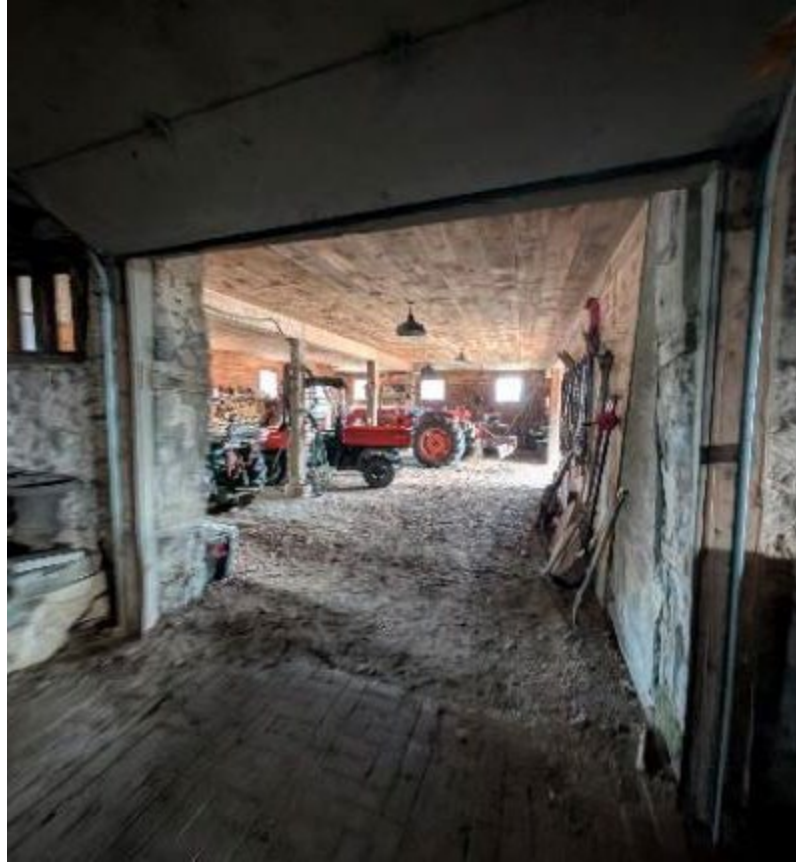


2026 Photos
Workshop in Upper Barn



2026 Photos

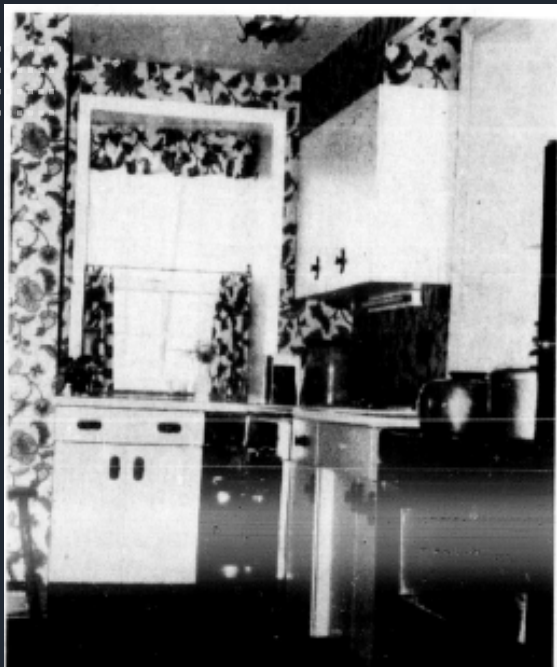
Lower Barn



2026 Photos
Lower Barn



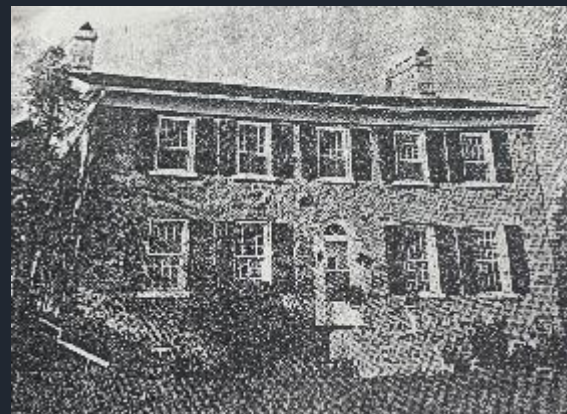
2026 Photos
Basement



EDGRAVE enjoy the
in the centre of the
m is furnished with a
see of soft fern velvet
and the drapes in the entrance doorway are
wool patchwork. The wall behind the fireplace
is pine.

2026 Photos

Vintage photos



Dear Mrs. Williams
I hope you will forgive me for
taking so long getting this photo off to you. I misplaced
your address and didn't want to take a chance
on the mail without being sure of your postal code.
Luckily I found the slip you gave us so better late than never as
they say.

As near as we can tell the picture was taken about
1924. The elderly gentleman seated is our grandfather
John Henderson died 1926, Mother Alberta died 1932
and father David died 1977.

Once again my brother and I would like to thank
you for your kindness in showing us the house. You
and your husband are to be commended for the work you have
been doing on it and on your interest in the history of the place.
If you and your husband are ever in Vancouver
be sure and look us up or at least give us a call.

Sincerely Bill Henderson

My address
Mr. Henderson
6611 Chatterton Rd.
Richmond BC
V7C 2Y6

Dear Mrs. Williams

I hope you will forgive me for taking so long getting this photo
off to you. I misplaced your address and didn't want to take a
chance on the mail without being sure of your postal code.
Luckily, I found the slip you gave us so better late than never as
they say.

As near as we can tell the picture was taken about 1924. The
elderly gentleman seated is our Grandfather John Henderson
died 1926, Mother Alberta died 1832 and Father David died
1977,

Once again, my brother and I would like to thank you for your
kindness in showing us the house. You and your husband are to
be commended for the work you have been doing on it and on
your interest in the history of the place. If you and your
husband are even in Vancouver, be sure and look us up or at
least give us a call.

Sincerely Bill Henderson

My Address

Bill Henderson

6711 Chatterton Rd

Richmond, BC V7C 2Y6