



# The Corporation of the Town of Milton

---

Report To: Council

From: Jill Hogan, Commissioner, Development Services

Date: March 16, 2026

Report No: DS-022-26

Subject: Recommendation Report - Notice of Intention to Designate -170 Main Street East \_ Knox Presbyterian Church

**Recommendation:** THAT Staff Report DS-022-26 entitled: "Notice of Intention to Designate - 170 Main Street East\_ Knox Presbyterian Church be received and;

THAT Milton Council recognizes the historic church at 170 Main Street East in the Town of Milton as being of heritage significance;

THAT Milton Council designate the property under Part IV of the Ontario Heritage Act, R.S.O. 1990, c. O.18 for the reasons outlined in the Reasons for Designation attached as Appendix 1 to this Report;

AND THAT the Town Clerk provides the Notice of Intention to Designate as outlined in Section 29 (4) of the Ontario Heritage Act;

AND FURTHER THAT once the thirty-day objection period has expired and if there are no objections, a designation by-law is brought forward for Council adoption.

## EXECUTIVE SUMMARY

- Knox Presbyterian Church, located at 170 Main Street East is a striking example of Gothic Revival architecture. Built in 1890, the church's intricate brickwork and traditional steeple define the downtown area, making it a prominent landmark for the community.
- The church board of directors has voluntarily responded to the heritage designation program and desires that their property be designated.
- Staff has evaluated this historic church as a significant built heritage resource for the Town of Milton and should be designated under Part IV of the Ontario Heritage Act. (See Appendix '1')

## **EXECUTIVE SUMMARY**

This significant heritage resource fulfils more than two of the evaluation criteria set out in Part IV of the Ontario Heritage Act (R.S.O. 1990), Ontario Regulation 9/06 (See Appendix 2). As such, it is worthy of designation under the provisions of the Ontario Heritage Act.

## **REPORT**

### **Background**

Knox Presbyterian Church, located at 170 Main Street East, is a striking example of Gothic Revival architecture. Built in 1890, the church's intricate brickwork and traditional steeple define the downtown area, making it a prominent landmark for the community. Its heritage value lies in the property's historic, physical, and contextual attributes.

### **Discussion**

Historically, the property was granted by the Crown to Daniel Greenians Senior in January 1832, who sold it to Henry Huffman in March 1832. The church sits on parts of Lots 13 and 14. Lot 13 changed hands several times: sold by Huffman in 1833, bought by Richard Moore in 1834, with later owners including John Dempsey (1839), George Dempsey (1855), John Brown (1867), Thomas Cook Brown Kerr (1871), Emily Willmott (1872), William Dempsey (1874), and William L.P. Eager (1878). The Congregation of Knox Church's trustees bought the land from Eager on August 12, 1890.

In the fall of 1890, John Hunter, a prominent contractor in the late 1800s, was selected to build this church for the congregation at a cost of approximately \$14,000. The original tender was \$9,950, but changes to the plan included using slate roofing instead of shingles and raising the spire by approximately one story. William Stewart (1832-1907), of Hamilton, designed this building and supervised the construction. He was a prominent "pioneer" architect in Hamilton, Ontario, known for designing numerous civic and commercial buildings, including a National Historic Site.

Hon. J. M. Gibson, Deputy Grand Master of the Grand Lodge of Canada, laid the cornerstone on September 18, 1890. The church was dedicated on June 28, 1891. The cornerstone trowel is now in the Narthex. The church's heritage value includes its physical, historical, and contextual significance, linking it to Milton's past. A rear wing, added in 1894, is now used as a Sunday School.

Major restoration work took place at the church in 2011-2012 to repair and reinforce the roof structure, including the timber scissor-truss frames. A new slate roof was installed; brickwork was repointed and cleaned; the eaves were modified for better rainwater protection; and the

## Discussion

interior was refurbished. For this careful restoration, Knox Presbyterian Church received a Heritage Milton Award in 2013.

The church played a vital role in the growth and history of the Presbyterian community, serving as a hub for spiritual life, social interaction, education, and civic engagement. It is worth noting that the Scottish residence first worships at St. Andrews, known as the Old Kirk, which was built in 1846 and is located at approximately 54 Main Street East. In 1855, the Knox congregation built a church at 103 Martin Street before the present church at 170 Main Street East was constructed. Among its congregation were many former mayors of Milton, including Dr. David Robertson, Dr. Robert King, Dr. Hugh Angus McColl, James Wilson Blain, John M. McKenzie, George H. Dawson, G.C. Gowland, and Dr. Cecil Hartley.

Physically, this distinctive, rectangular brick building is a prime example of Gothic Revival architecture, prominently featuring a traditional side tower. The church includes a narthex, a five-bay nave, an apse, and a rear-wing addition. Its steeply pitched gable slate roof is accented by closed metal bargeboards, verges, fascia, and eaves. The side brick tower rises to a slate-covered steeple capped with a decorative finial. Brick buttresses and corbelled brick cornices enhance the east and west elevations, while a single-flue brick chimney with a metal cap marks the southern end. Two straight flights of concrete stairs with metal handrails lead to the main entrances, each adorned with double-leaf, five-panel, centre-pointed doors, half-round trim, brick architraves, and Gothic arch surrounds. The church's Gothic-arched stained glass tracery windows, set with brick voussoirs, stone labels, and stone lug sills, showcase an array of intricate designs. Especially noteworthy is the north elevation, which features a dramatic grouping of five lancet windows crowned by a quatrefoil. The Gothic-arched tracery windows demonstrate a high degree of technical achievement in glass and stone works.

Contextually, this property is an important place of worship building that is crucial in maintaining and supporting the historical character of Downtown Milton. The prominent location of this church along Main Street East provides a visual link and sense of place to Downtown Milton. Serving as a central landmark for the Presbyterian community, this church is also recognized as a historical treasure in downtown Milton.

Key attributes that reflect the cultural heritage value of the property include:

- The massing of this one-storey, rectangular, five-bay brick structure in the Gothic Revival style, with a traditional side tower.
- High-pitched gable slate roof with closed metal bargeboard, verges, fascia, and eaves
- Side brick tower, slate-covered steeple capped with a finial,

## Discussion

- Brick buttresses and corbel brick cornices on the East and West elevations
- Single flue brick chimney with metal capping at the South end
- Two pairs of double-leaf five-panel centre-pointed entrance doors, half-round trims, brick architrave, and gothic arch surround.
- Triple lancet-stained glass Gothic arched tracery windows with brick voussoir, and stone lug sills on the East and West elevations.
- Gothic arched stained glass tracery windows with brick voussoir, stone label, and stone lug sills at the North elevation, comprising a group of five lancet windows topped with a quatrefoil
- Gothic arched stained glass tracery windows with brick voussoir, stone label, and stone lug sills at the Narthex
- Gothic arched stained glass tracery windows with brick voussoir surround and stone lug sills at the tower
- The subject property was built by John Hunter, a prominent contractor in the late 1800s. William Stewart (1832-1907), of Hamilton, designed this building and supervised the construction. He was a prominent and "pioneer" architect in Hamilton, Ontario, known for designing numerous civic and commercial buildings, including a National Historic Site.
- Contextually, this church is a key landmark for the Presbyterian community in the region and remains a historical treasure in defining the heritage character of Downtown Milton, reinforcing both community identity and local heritage.

## Staff Recommendation

Staff recommend that the optimal conservation and protection measures for this heritage property is the designation of the property.

## Financial Impact

There is no financial impact associated with this report.

Respectfully submitted,



Jill Hogan  
Commissioner, Development Services

For questions, please contact: Anthony Wong, Senior Policy Planner Phone: Ext. 2565

### Attachments

- Appendix '1'\_Reasons for Designation for 170 Main Street East
- Appendix '2'\_CHVI Evaluation\_ 170 Main Street East
- Appendix '3'\_Photographic Record Heritage Attributes\_ 170 Main Street East

Approved by CAO  
Andrew M. Siltala  
Chief Administrative Officer

### Recognition of Traditional Lands

The Town of Milton resides on the Treaty Lands and Territory of the Mississaugas of the Credit First Nation. We also recognize the traditional territory of the Huron-Wendat and Haudenosaunee people. The Town of Milton shares this land and the responsibility for the water, food and resources. We stand as allies with the First Nations as stewards of these lands.

## Reasons for Designation

### 170 Main Street East\_ Knox Presbyterian Church



## Legal Description

Survey Foster Blk 8 Pt Lots 13,14 Pt Blk A

## Description of Property

Knox Presbyterian Church, located at 170 Main St E in Milton, Ontario, is a striking example of Gothic Revival architecture. Built in 1890, the church's intricate brickwork and traditional steeple define the downtown area, making it a prominent landmark for the Presbyterian community.

## Statement of Cultural Value and Interest

### Historical Value

The property was granted by the Crown to Daniel Greenians Senior in January 1832, who sold it to Henry Huffman in March 1832. The church sits on parts of Lots 13 and 14. Lot 13 changed hands several times: sold by Huffman in 1833, bought by Richard Moore in 1834, with later owners including John Dempsey (1839), George Dempsey (1855), John Brown (1867), Thomas Cook Brown Kerr (1871), Emily Willmott (1872), William Dempsey (1874), and William L.P. Eager (1878). The Congregation of Knox Church's trustees bought the land from Eager on August 12, 1890.

In the fall of 1890, John Hunter, a prominent contractor in the late 1800s, was selected to build this church for the congregation at a cost of approximately \$14,000. The original tender was \$9,950, but changes to the plan included using slate roofing instead of shingles and raising the spire by approximately one story. William Stewart (1832-1907), of Hamilton, designed this building and supervised the construction. He was a prominent "pioneer" architect in Hamilton, Ontario, known for designing numerous civic and commercial buildings, including a National Historic Site.

Hon. J. M. Gibson, Deputy Grand Master of the Grand Lodge of Canada, laid the cornerstone on September 18, 1890. The church was dedicated on June 28, 1891. The cornerstone trowel is now in the Narthex. The church's heritage value includes its physical, historical, and contextual significance, linking it to Milton's past. A rear wing, added in 1894, is now used as a Sunday School.

Major restoration work took place at the church in 2011-2012 to repair and reinforce the roof structure, including the timber scissor-truss frames. A new slate roof was installed; brickwork was repointed and cleaned; the eaves were modified for better rainwater protection; and the interior was refurbished. For this careful restoration, Knox Presbyterian Church received a Heritage Milton Award in 2013.

The church played a vital role in the growth and history of the Presbyterian community, serving as a hub for spiritual life, social interaction, education, and civic engagement. It is worth noting that the Scottish residence first worships at St. Andrews, known as the Old Kirk, which was built in 1846 and is located at approximately 54 Main Street East. In 1855, the Knox congregation built a church at 103 Martin Street before the present church at 170 Main Street East was constructed. Among its congregation were many former mayors of Milton, including Dr. David Robertson, Dr. Robert King, Dr. Hugh Angus McColl, James Wilson Blain, John M. McKenzie, George H. Dawson, G.C. Gowland, and Dr. Cecil Hartley.

## **Physical or Design Value**

This distinctive one-storey, rectangular brick building is a prime example of Gothic Revival architecture, prominently featuring a traditional side tower. The church includes a narthex, a five-bay nave, an apse, and a rear-wing addition. Its steeply pitched gable slate roof is accented by closed metal bargeboards, verges, fascia, and eaves. The side brick tower rises to a slate-covered steeple capped with a decorative finial. Brick buttresses and corbelled brick cornices enhance the east and west elevations, while a single-flue brick chimney with a metal cap marks the southern end. Two straight flights of concrete stairs with metal handrails lead to the main entrances, each adorned with double-leaf, five-panel, centre-pointed doors, half-round trim, brick architraves, and Gothic arch surrounds. The church's Gothic-arched stained glass tracery windows, set with brick voussoirs, stone labels, and stone lug sills, showcase an array of intricate designs. Especially noteworthy is the north elevation, which features a dramatic grouping of five lancet windows crowned by a quatrefoil. The Gothic-arched tracery windows demonstrate a high degree of technical achievement in glass and stone works.

## Contextual Value

The property is an important place of worship building that is crucial in maintaining and supporting the historical character of Downtown Milton. The prominent location of this church along Main Street East provides a visual link and sense of place to Downtown Milton. Serving as a central landmark for the Presbyterian community, this church is also recognized as a historical treasure in downtown Milton.

## Character Defining Elements/Heritage Attributes

Key attributes that reflect the cultural heritage value of the property include:

- The massing of this one-storey, rectangular, five-bay brick structure in the Gothic Revival style, with a traditional side tower.
- High-pitched gable slate roof with closed metal bargeboard, verges, fascia, and eaves
- Side brick tower, slate-covered steeple capped with a finial,
- Brick buttresses and corbel brick cornices on the East and West elevations
- Single flue brick chimney with metal capping at the South end
- Two pairs of double-leaf five-panel centre-pointed entrance doors, half-round trims, brick architrave, and gothic arch surround.
- Triple lancet-stained glass Gothic arched tracery windows with brick voussoir, and stone lug sills on the East and West elevations.
- Gothic arched stained glass tracery windows with brick voussoir, stone label, and stone lug sills at the North elevation, comprising a group of five lancet windows topped with a quatrefoil
- Gothic arched stained glass tracery windows with brick voussoir, stone label, and stone lug sills at the Narthex
- Gothic arched stained glass tracery windows with brick voussoir surround and stone lug sills at the tower
- The subject property was built by John Hunter, a prominent contractor in the late 1800s. William Stewart (1832-1907), of Hamilton, designed this building and supervised the construction. He was a prominent and "pioneer" architect in Hamilton, Ontario, known for designing numerous civic and commercial buildings, including a National Historic Site.
- Contextually, this church is a key landmark for the Presbyterian community in the region and remains a historical treasure in defining the heritage character of Downtown Milton, reinforcing both community identity and local heritage

## Cultural Heritage Value or Interest Evaluation

Ontario Regulation 9/06 of the *Ontario Heritage Act* establishes the criteria for determining Cultural Heritage Value of Heritage Resources. A property must have the potential to meet at least two of the criteria to be considered to have heritage significance. These criteria fall into three categories: design or physical value, historical or associative value and contextual value. The following table considers and evaluates the subject property against these criteria.

**Table 6: Evaluation of the Cultural Heritage Value of 170 Main Street East**

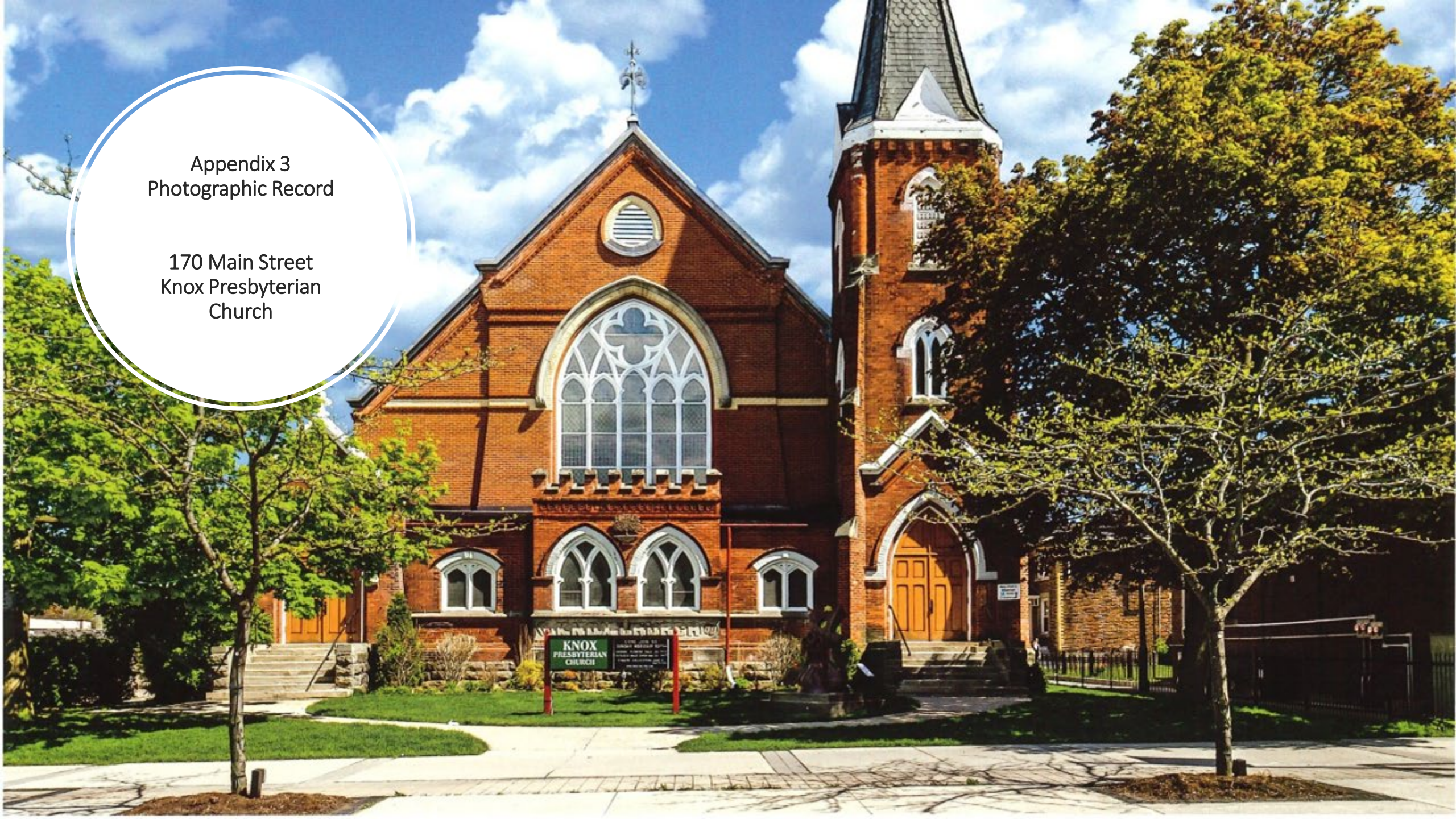
The property has design value or physical value because it,		
	Criteria	Evaluation
i	is a rare, unique, representative or early example of a style, type, expression, material or construction method	The property is a striking example of Gothic Revival architecture, reflecting both the period's aesthetic values and the community's aspirations. Built in 1890, the church exhibits intricate brickwork and a traditional side tower with a steeple.
ii	displays a high degree of craftsmanship or artistic merit	The property displays a high degree of craftsmanship in both design and materials, particularly evident in the brick buttresses, corbelled brick cornices, and Gothic-arched stained glass tracery windows.
iii	demonstrates a high degree of technical or scientific achievement	The Gothic-arched tracery windows demonstrate a high degree of technical achievement in glass and stone works.
The property has historical value or associative value because it,		
i	has direct associations with a theme, event, belief, person, activity, organization or institution that is significant to a community,	This church played a vital, multifaceted role in the development and history of the Milton community, serving as a center for spiritual life, social interaction, education, and civic engagement. Many past mayors of Milton were members of this congregation.

ii	Yields or has the potential to yield, information that contributes to an understanding of a community or culture	This church provides important insights into the formation of the Presbyterian community in Milton.
iii	demonstrates or reflects the work or ideas of an architect, artist, builder, designer or theorist who is significant to a community	The subject property was built by John Hunter, a prominent contractor in the late 1800s. William Stewart (1832-1907), of Hamilton, designed this building and supervised the construction. He was a prominent and "pioneer" architect in Hamilton, Ontario, known for designing numerous civic and commercial buildings, including a National Historic Site.
The property has contextual value because it,		
i	is important in defining, maintaining or supporting the character of an area	The property is an important place of worship building that is crucial in maintaining and supporting the historical character of Downtown Milton.
ii	is physically, functionally, visually or historically linked to its surroundings	The prominent location of this church along Main Street East provides a visual link and sense of place to Downtown Milton.
iii	is a landmark	Serving as a central landmark for the Presbyterian community, this church is also recognized as a historical treasure in downtown Milton.

Based on the above criteria, the subject property has significant cultural heritage value based on both design and contextual criteria. These attributes are sufficient to warrant Heritage Designation under the *Ontario Heritage Act*.

Appendix 3  
Photographic Record

170 Main Street  
Knox Presbyterian  
Church





2025 Photos

North Elevation



2025 Photos

South Elevation



2025 Photos

East Elevation

## 2025 Photos

---

West elevation





2025 Photos

Rear Wing Addition  
was built in 1894



## 2025 Photos

Interior Rear Wing Addition \_  
Sunday School



# 2025 Photos

Interior of Addition \_ Basement

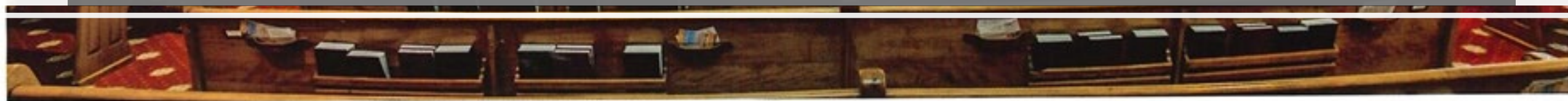


View of Nave and Narthex





View of Nave and Apse



# 2025 Photos \_ Crawl Space Basement of Church



## 2025 Photos

Interior four panel wooden doors with moulded trims and segmented arched stain glass transom





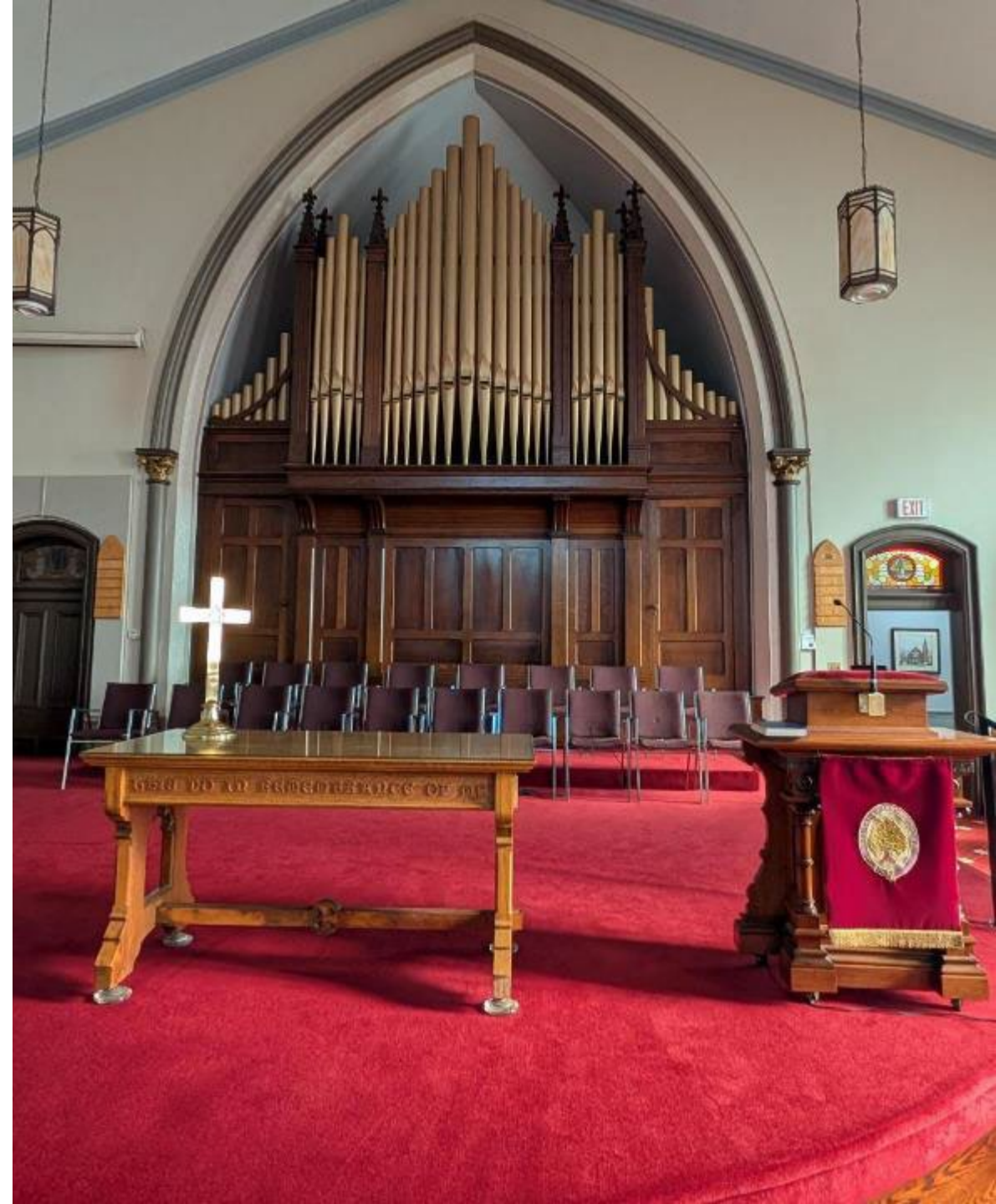
# 2025 Photos

---

View of Narthex



2025 Photos  
\_View of Nave  
and Apse



# Contextual Heritage Attributes

- PLAN 15
- SURVEY FOSTER
- BLK 8
- PT LOTS 13,14 PT BLK A
- REG AC 95.00
- FR 245.4
- OD

I hereby certify that the within is a correct map or plan of the Village of Milton being parts of Lots numbers 13 and 14 in the second concession of the new Survey of the Township of Trafalgar, in the County of Halton of the Province of Canada, which Map or Plan was drawn by me in pursuance of and in Compliance with the Provincial Statute 12 Victoria Chapter 35 and section 42.

Dated this eighteenth day of December One thousand eight hundred and fifty-four.

Signed: Henry Winkler  
Provincial Land Surveyor

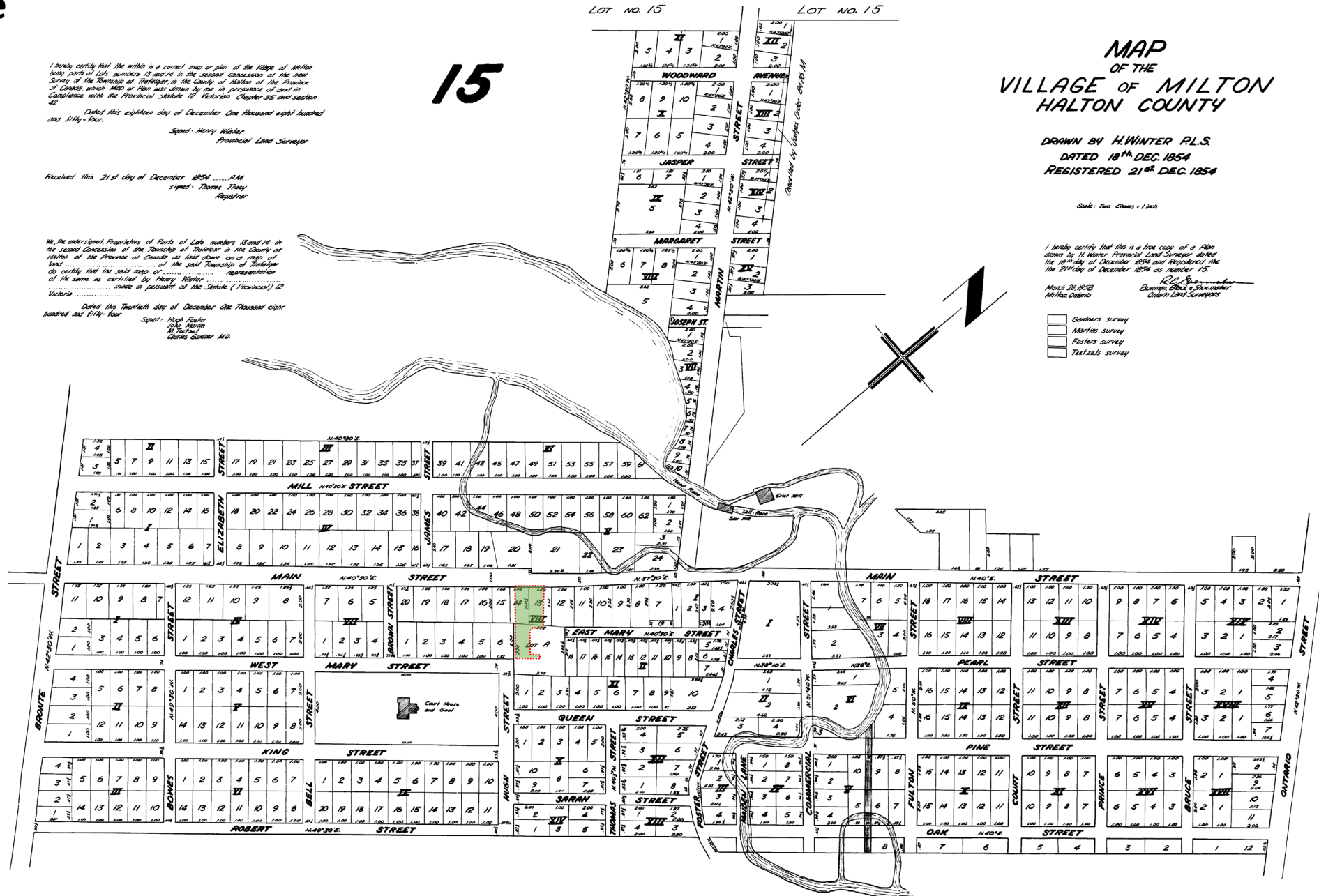
Received this 21st day of December 1854 ..... P.M.  
Signed: Thomas Tracy  
Registrar

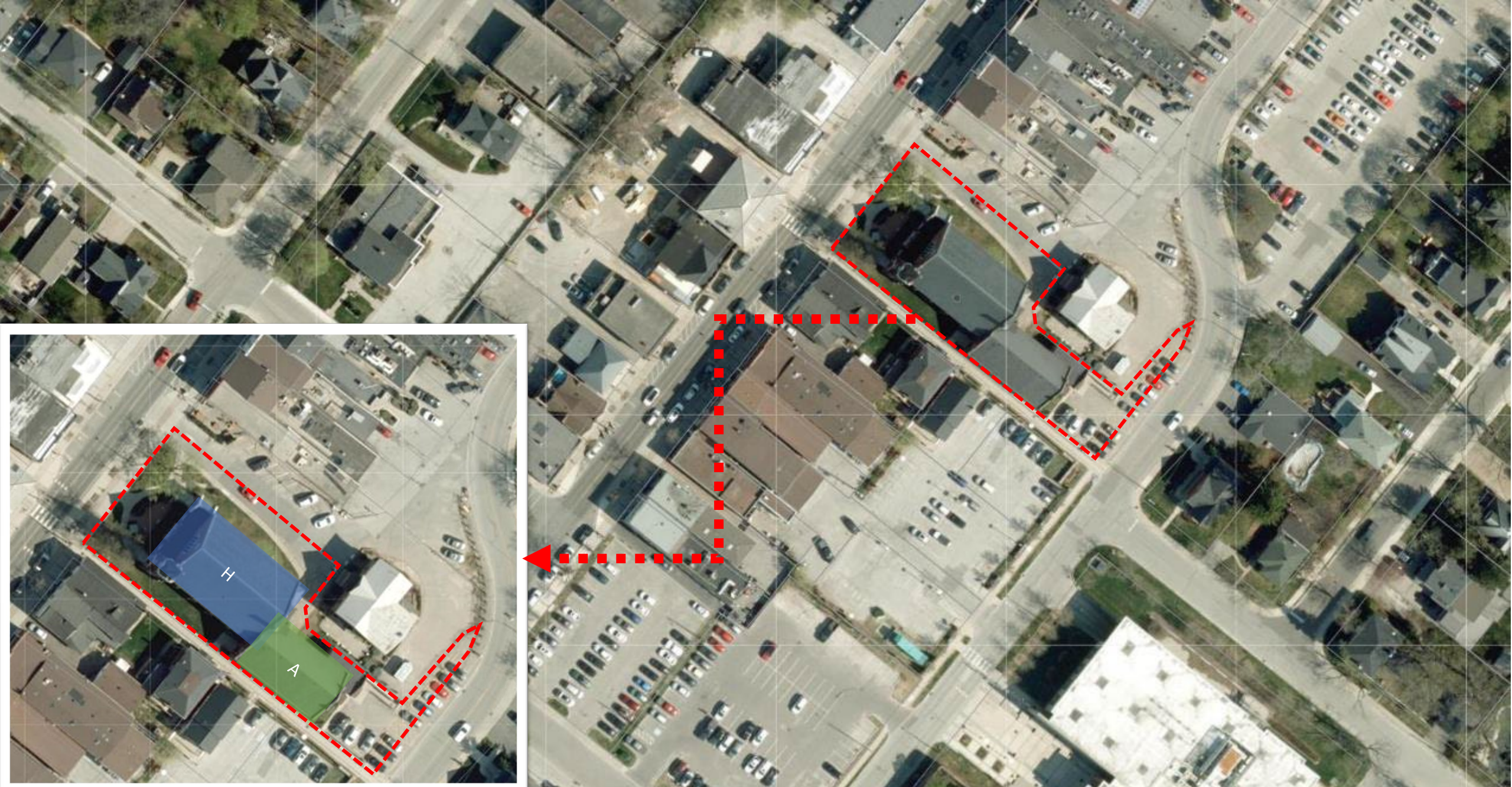
We, the undersigned Proprietors of Parts of Lots numbers 13 and 14 in the second Concession of the Township of Trafalgar in the County of Halton of the Province of Canada as laid down on a map of land ..... of the said Township of Trafalgar do certify that the said map or ..... representative of the same as certified by Henry Winkler, Provincial Land Surveyor, made in pursuance of the Statute (Provincial) 12 Victoria

Dated this Twentieth day of December One thousand eight hundred and fifty-four

Signed: Hugh Foster  
John Martin  
M. Taylor  
Charles Foster M.O.  
Charles Foster M.O.

15






Location Map\_ 170 Main Street\_ Knox Presbyterian Church



# Milton Heritage Inventory Record

- This property was a Listed Heritage Resource since 2006.

MILTON L.A.C.A.C. HERITAGE INVENTORY	
BUILDING TYPE: Religious	INVENTORY #:
ADDRESS: 170 Main St. E. L9T 1N8	
BUILDING NAME: Knox Presbyterian Church	
ORIGINAL USE: Church	CONSTRUCTED: 1890-1891
PRESENT USE: Church	
DESIGNATION:	DATE:
HISTORY	
<p>This land was bought from W. L. P. Eager. William Stewart of Hamilton designed this building and supervised the construction. John Hunter of Milton was the contractor, and built this church for \$14 074.35. The original tender was for \$9 950. but changes were made to the original plans, such as using slate roofing instead of shingle, and raising the spire approximately one story higher than planned. The cornerstone was laid on September 18, 1890 and this church was dedicated on June 28, 1891.</p>	
ARCHITECTURAL COMMENTS	
<p><b>WALLS:</b> A single one-story rectangular building of stretcher brick, with an apse, a narthex, a rear wing, five bays and a stone foundation.</p> <p><b>ROOF:</b> A high slate gable roof with flush wooden eaves and plain wooden fascias, a tower, a single brick chimney and finials.</p> <p><b>WINDOWS:</b> Pointed hinged stained glass windows with brick labels, voussoirs and moulded trim, plain stone lug sills and semi-elliptical windows.</p> <p><b>DOORWAYS:</b> Two sets of pointed double doors of vertical board, with brick labels, voussoirs and moulded trim.</p> <p><b>PORCHES:</b> Straight first floor stairs with closed railings.</p> <p><b>OTHERS:</b> The Sunday School building was added in 1894.</p>	

# Abstract of all Instruments Registered

In the registry for the County of Halton mentioning Lot 13 and 14

B114 24 185

All Instruments Registered in the Registry Office for the County of Halton mentioning Lot 13 and 14

YEAR	MONTH	DAY	INSTRUMENT	PARTY	DESCRIPTION	VALUE	REGISTERED BY	DATE
1850	Jan	25	Deed	James	Small portion of land	100	James	1850
1851	Feb	10	Deed	James	Small portion of land	100	James	1851
1852	Mar	15	Deed	James	Small portion of land	100	James	1852
1853	Apr	20	Deed	James	Small portion of land	100	James	1853
1854	May	25	Deed	James	Small portion of land	100	James	1854
1855	Jun	30	Deed	James	Small portion of land	100	James	1855
1856	Jul	5	Deed	James	Small portion of land	100	James	1856
1857	Aug	10	Deed	James	Small portion of land	100	James	1857
1858	Sep	15	Deed	James	Small portion of land	100	James	1858
1859	Oct	20	Deed	James	Small portion of land	100	James	1859
1860	Nov	25	Deed	James	Small portion of land	100	James	1860
1861	Dec	30	Deed	James	Small portion of land	100	James	1861
1862	Jan	5	Deed	James	Small portion of land	100	James	1862
1863	Feb	10	Deed	James	Small portion of land	100	James	1863
1864	Mar	15	Deed	James	Small portion of land	100	James	1864
1865	Apr	20	Deed	James	Small portion of land	100	James	1865
1866	May	25	Deed	James	Small portion of land	100	James	1866
1867	Jun	30	Deed	James	Small portion of land	100	James	1867
1868	Jul	5	Deed	James	Small portion of land	100	James	1868
1869	Aug	10	Deed	James	Small portion of land	100	James	1869
1870	Sep	15	Deed	James	Small portion of land	100	James	1870
1871	Oct	20	Deed	James	Small portion of land	100	James	1871
1872	Nov	25	Deed	James	Small portion of land	100	James	1872
1873	Dec	30	Deed	James	Small portion of land	100	James	1873
1874	Jan	5	Deed	James	Small portion of land	100	James	1874
1875	Feb	10	Deed	James	Small portion of land	100	James	1875
1876	Mar	15	Deed	James	Small portion of land	100	James	1876
1877	Apr	20	Deed	James	Small portion of land	100	James	1877
1878	May	25	Deed	James	Small portion of land	100	James	1878
1879	Jun	30	Deed	James	Small portion of land	100	James	1879
1880	Jul	5	Deed	James	Small portion of land	100	James	1880
1881	Aug	10	Deed	James	Small portion of land	100	James	1881
1882	Sep	15	Deed	James	Small portion of land	100	James	1882
1883	Oct	20	Deed	James	Small portion of land	100	James	1883
1884	Nov	25	Deed	James	Small portion of land	100	James	1884
1885	Dec	30	Deed	James	Small portion of land	100	James	1885
1886	Jan	5	Deed	James	Small portion of land	100	James	1886
1887	Feb	10	Deed	James	Small portion of land	100	James	1887
1888	Mar	15	Deed	James	Small portion of land	100	James	1888
1889	Apr	20	Deed	James	Small portion of land	100	James	1889
1890	May	25	Deed	James	Small portion of land	100	James	1890
1891	Jun	30	Deed	James	Small portion of land	100	James	1891
1892	Jul	5	Deed	James	Small portion of land	100	James	1892
1893	Aug	10	Deed	James	Small portion of land	100	James	1893
1894	Sep	15	Deed	James	Small portion of land	100	James	1894
1895	Oct	20	Deed	James	Small portion of land	100	James	1895
1896	Nov	25	Deed	James	Small portion of land	100	James	1896
1897	Dec	30	Deed	James	Small portion of land	100	James	1897
1898	Jan	5	Deed	James	Small portion of land	100	James	1898
1899	Feb	10	Deed	James	Small portion of land	100	James	1899
1900	Mar	15	Deed	James	Small portion of land	100	James	1900



January 21, 2013

Pastor Howard Sullivan  
Knox Presbyterian Church  
170 Main Street East  
Milton, ON L9T 1N8

Dear Pastor Howard Sullivan,

Re: Knox Presbyterian Church, Milton

I am writing to you on behalf of Heritage Milton. Heritage Milton is a Citizens Advisory Committee that advises and assists Council on all matters relating to the conservation of property that is of historic, cultural or architectural value. As part of its mandate it gives awards annually to those property owners who have recently undertaken building projects that have contributed to the preservation of the built heritage within Milton.

Heritage Milton gives awards annually to those property owners who have recently undertaken building projects that have contributed to the preservation of the built heritage within Milton. Heritage Milton consider that the recent renovation and refurbishment of the Knox Church has been done so well and that is a fabulous example of how good conservation practice can be employed when repairing and renovating an important heritage buildings such as the Knox Church. As a consequence Heritage Milton would like to present the Church with a Heritage Award for this outstanding renovation project of a Listed heritage building within Milton's Character Area.

The award ceremony will take place in February. It is most likely to take place at the beginning of the Council meeting on February 25, although the arrangements have not yet been finalized. If you wish to receive this award please contact me on 905 878 7252 ext. 2565 at your earliest opportunity.

Yours sincerely,

Anne Fisher MCIP, RPP, MRTPI  
Planner – Development Review  
Tel. (905) 878-7252 Ext. 2565  
Fax. (905) 876-5024

## Historical Award

---

- In 2013, Knox Presbyterian Church received a **Heritage Milton Award** for restoration, showcasing intricate brickwork and a traditional steeple that defines its presence in the downtown area and serves as a key landmark for the Presbyterian community in the region.



Construction in 1890 showing several workers and interested residents watching. In the background is the Knox Manse purchased from Mr. Eager who had built the home in 1877.



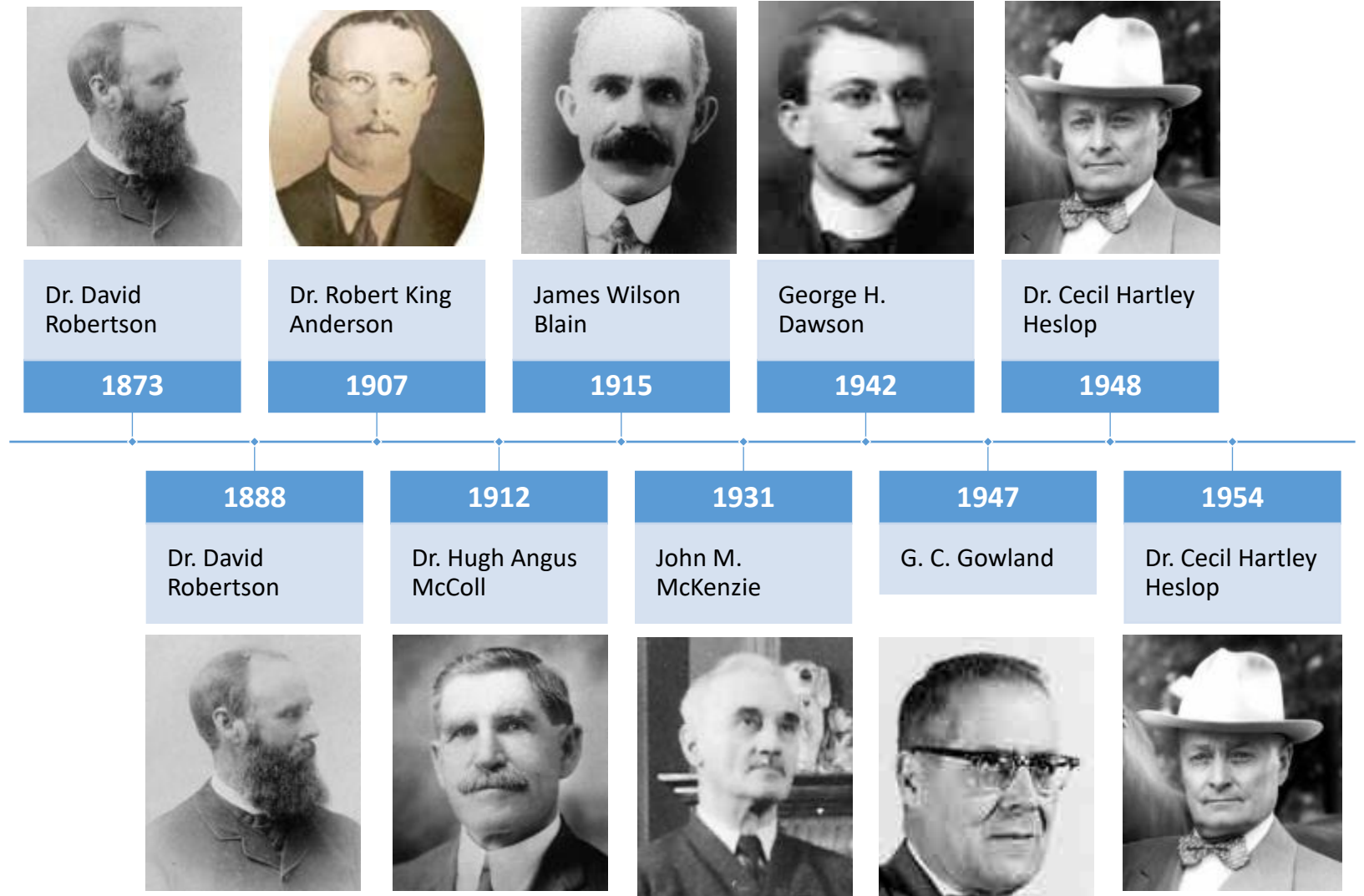
# William Stewart (1832-1907)

---

- He was a prominent and "pioneer" architect in Hamilton, Ontario, known for designing numerous civic and commercial buildings, including a National Historic Site.
- Born in Toronto, William Stewart spent the early part of his career traveling through the U.S. Midwest and South, practicing architecture in several states before returning to Canada in 1872. He worked in Toronto, eventually moving his practice to Hamilton, Ontario, in 1885, where he spent the remainder of his life and career.
- He was known for his versatility in various architectural styles, including the High Victorian, Gothic, Chateausque/Romanesque, and Beaux-Arts styles.

# Historical Attributes

- Mayors of Milton who were members of Knox Presbyterian Church

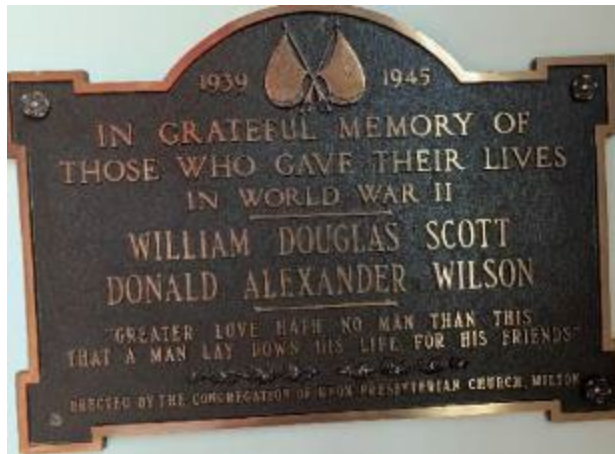




**Rev. Stephen (Steve) Rothery**  
2020-Present

Pastors of  
Knox  
Presbyterian  
Church






# Memorials

## Physical Attributes

- Massing of the one-storey rectangular-shaped five bay brick Gothic Revival-style building with brick buttresses and a traditional side tower





# Physical Attributes

---

High-pitched gable slate roof with closed metal bargeboard, verges, fascia and eaves





Brick buttresses and corbel brick cornices on East  
and West elevation

## Physical Attributes

# Physical Attributes

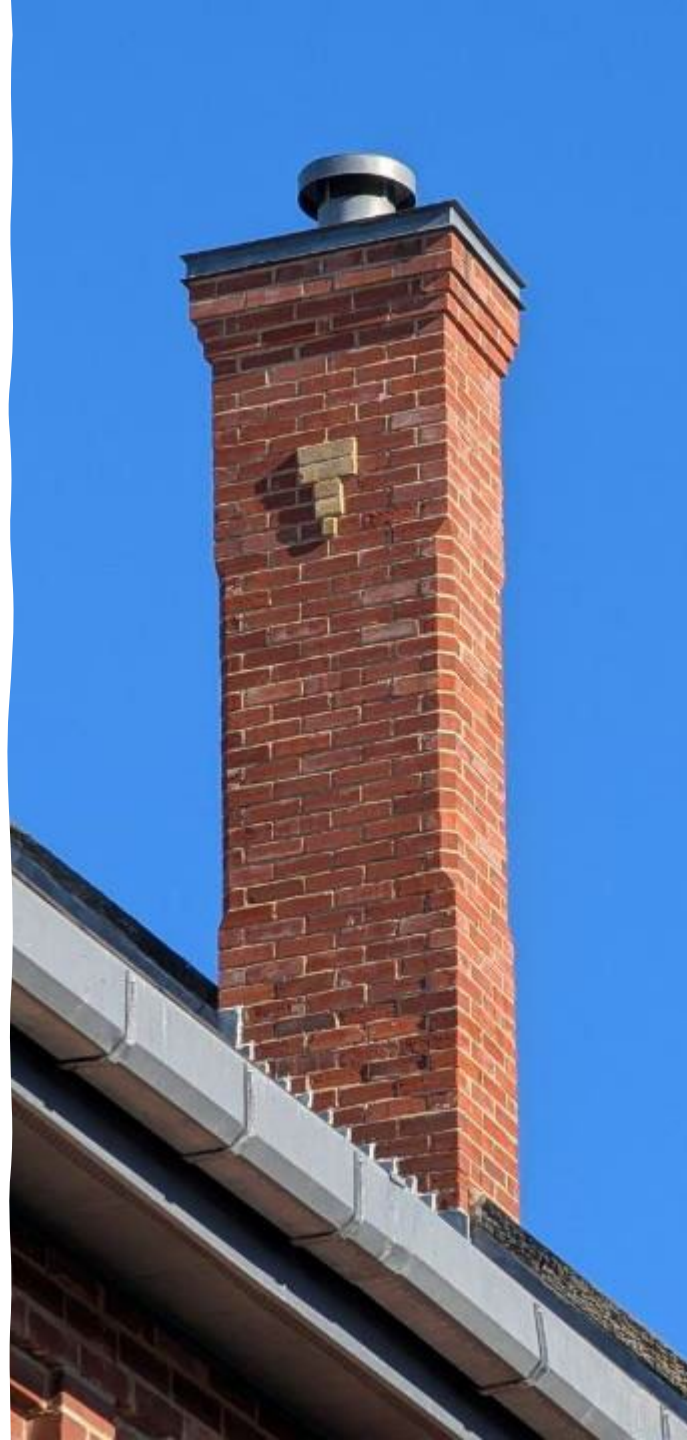
Side brick tower, slate covered steeple capped with finial



# Physical Attributes

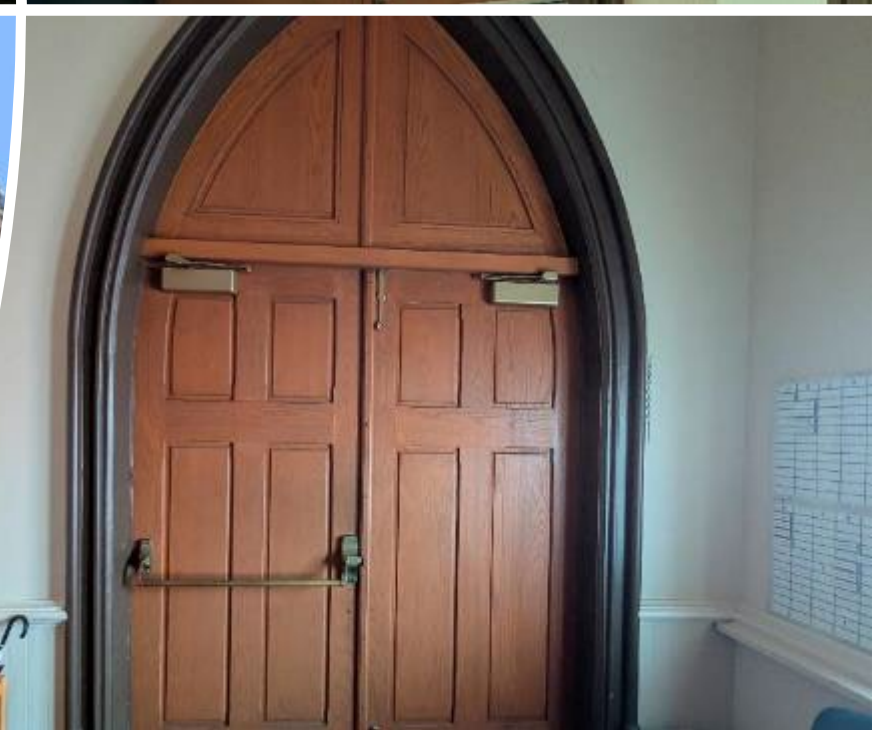
---

Single flue brick chimney with metal capping at the South end



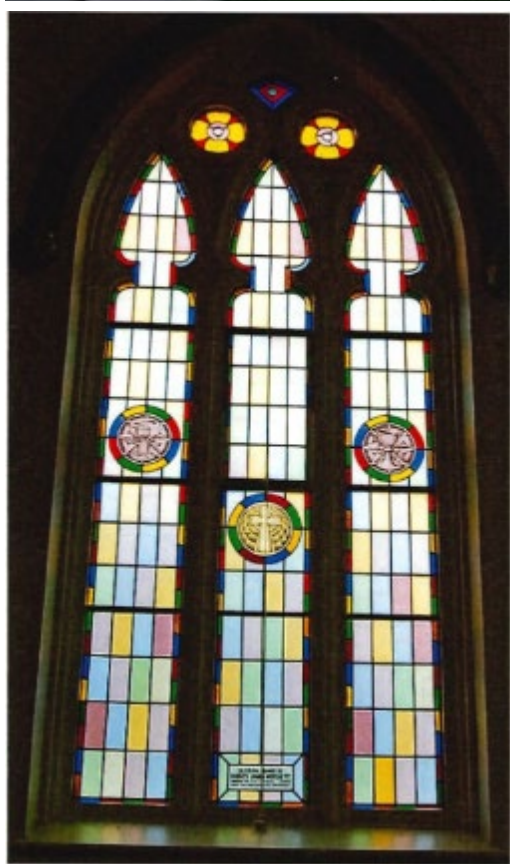
## Physical Attributes

- Two pairs of double leaf five-panel centre pointed entrance door, half round trims, brick architrave and gothic arch surround



# Physical Attributes

Triple Lancelt stain glass Gothic arched tracery windows with, brick voussoir, and stone lug sills on west facade



**Baptismal Font**

Cross - Chalice cup; are seen in the inset panels on the window



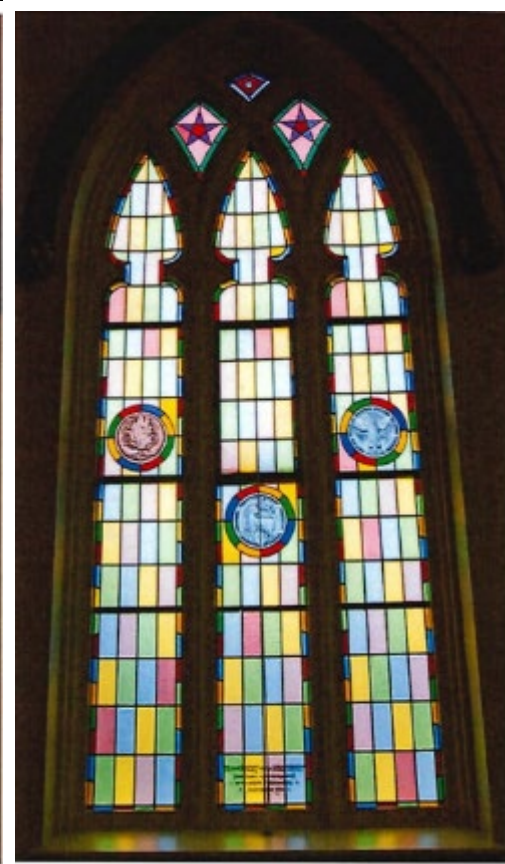
**Candlelight**

Basket of Fish - White Dove; are seen in the inset panels on the window



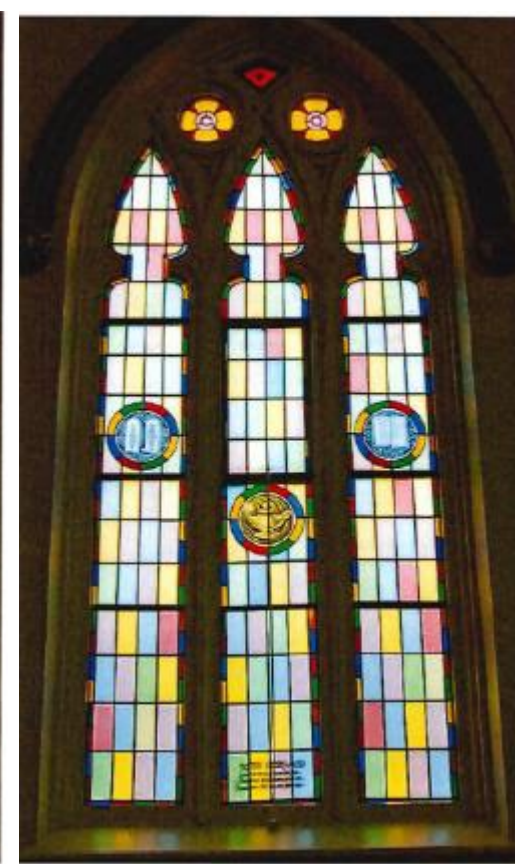
**Wheat Bale**

IHS- Hammer and Tongs; are seen in the inset panels on the window



**Burning Bush**

Lamb and Cross - Dove; are seen in the inset panels on the window.



**Roman Numerals**

Lamp for Oil, Open Bible



## Physical Attributes

Triple Lancet stain glass Gothic arched tracery windows with, brick voussoir, and stone lug sills interior



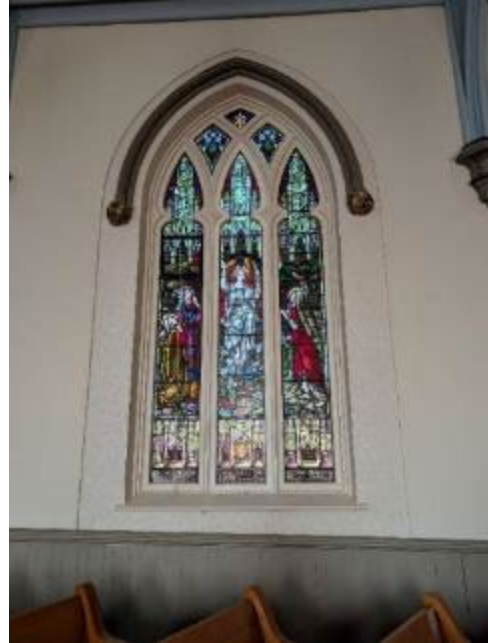
**Robertson Memorial Window**

"The little Children of Jesus " Jesus said suffer little children and forbid them not, to come unto me



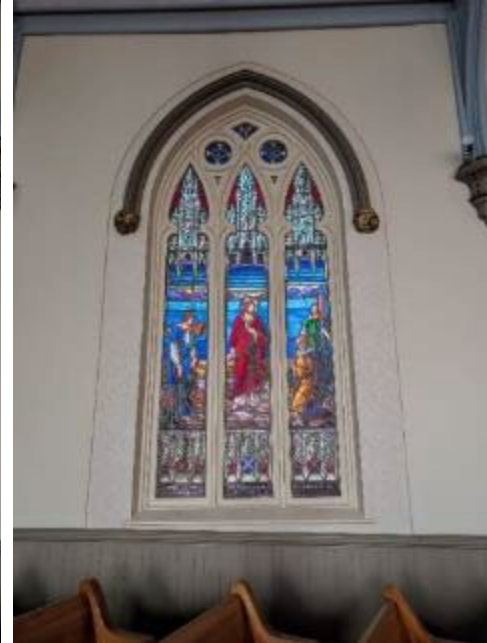
**The Hume Memorial Window**

"The Resurrection " He is risen from the dead and behold he goes before you into Galilee



**The Agnew Memorial Window**

"On the road to Emmaus " Abide with us for it is toward evening



**The Ptolemy Memorial Window**

"The Calling of the First Disciples " they straightway left their nets and followed him

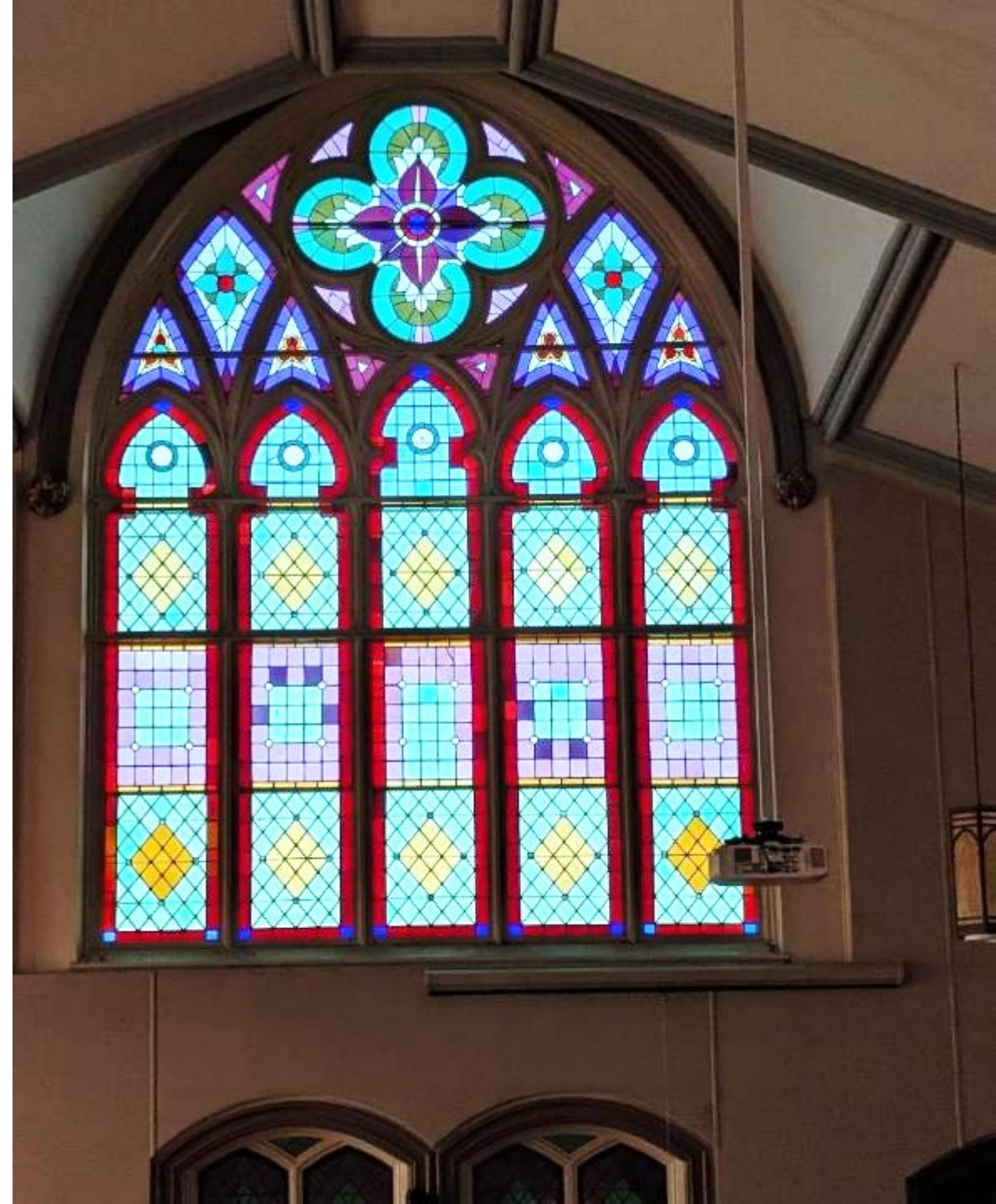


**The Mill's Memorial Window**

And great multitudes came unto him, having with them those that were lame, blind, dumb, maimed, and many others, and cast them down at Jesus' feet; and he healed them

## Physical Attributes

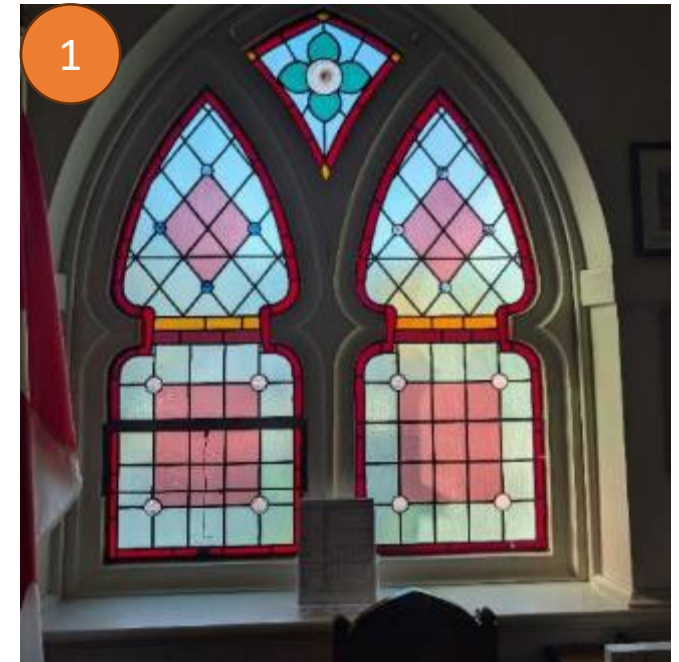
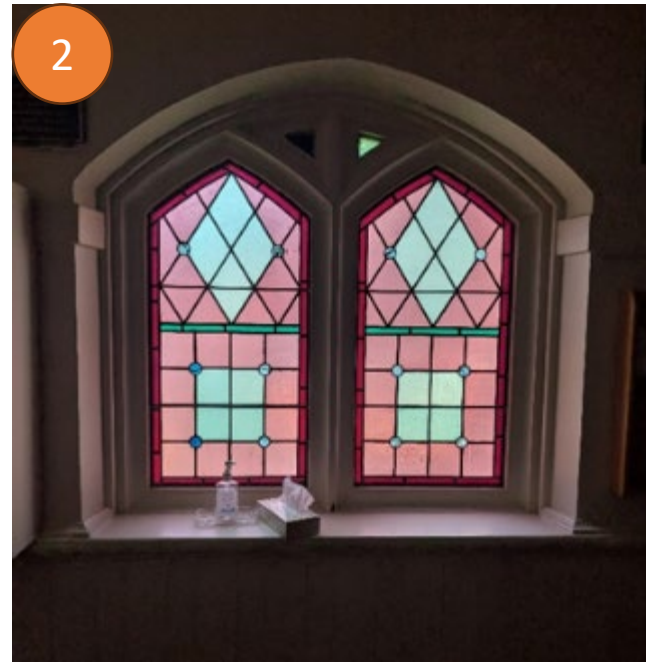
- Gothic arched stain glass tracery windows with, brick voussoir, stone label and stone lug sills at the North elevation comprising of a group of five lancet windows top with a with quatrefoil



## Physical Attributes

- Gothic arched stain glass tracery windows with, brick voussoir, stone label and stone lug sills at the Narthex

- 
1. Double lancet stain glass window
  2. Double pentagon stain glass window
  3. Castellated brick parapet with stone cap and brick medallion frieze





## Physical Attributes

- Gothic arched stain glass tracery windows with, brick voussoir surround and stone lug sills at the tower