



The Corporation of the Town of Milton

Report To:	Council
From:	M. Paul Cripps, P. Eng., Commissioner, Engineering Services
Date:	July 22, 2019
Report No:	ENG-024-19
Subject:	Santa Maria Boulevard and McLaughlin Avenue - Implementation of All-way Stop
Recommendation:	<p>THAT a by-law be enacted to amend By-law 1984-1, as amended, to implement an all-way stop at the intersection of Santa Maria Boulevard and McLaughlin Avenue (see Appendix I);</p> <p>AND THAT Schedule 12 and Schedule 13 of the Uniform Traffic Control By-law be amended accordingly (see Appendix II);</p> <p>AND FURTHER THAT the appropriate by laws be presented to Council for approval.</p>

REPORT

Background

The Engineering Services department has received several requests to install an all-way stop at the intersection of Santa Maria Boulevard and McLaughlin Avenue over the past few years. Residents have expressed safety concerns with the amount of traffic and pedestrians at this intersection.

Discussion

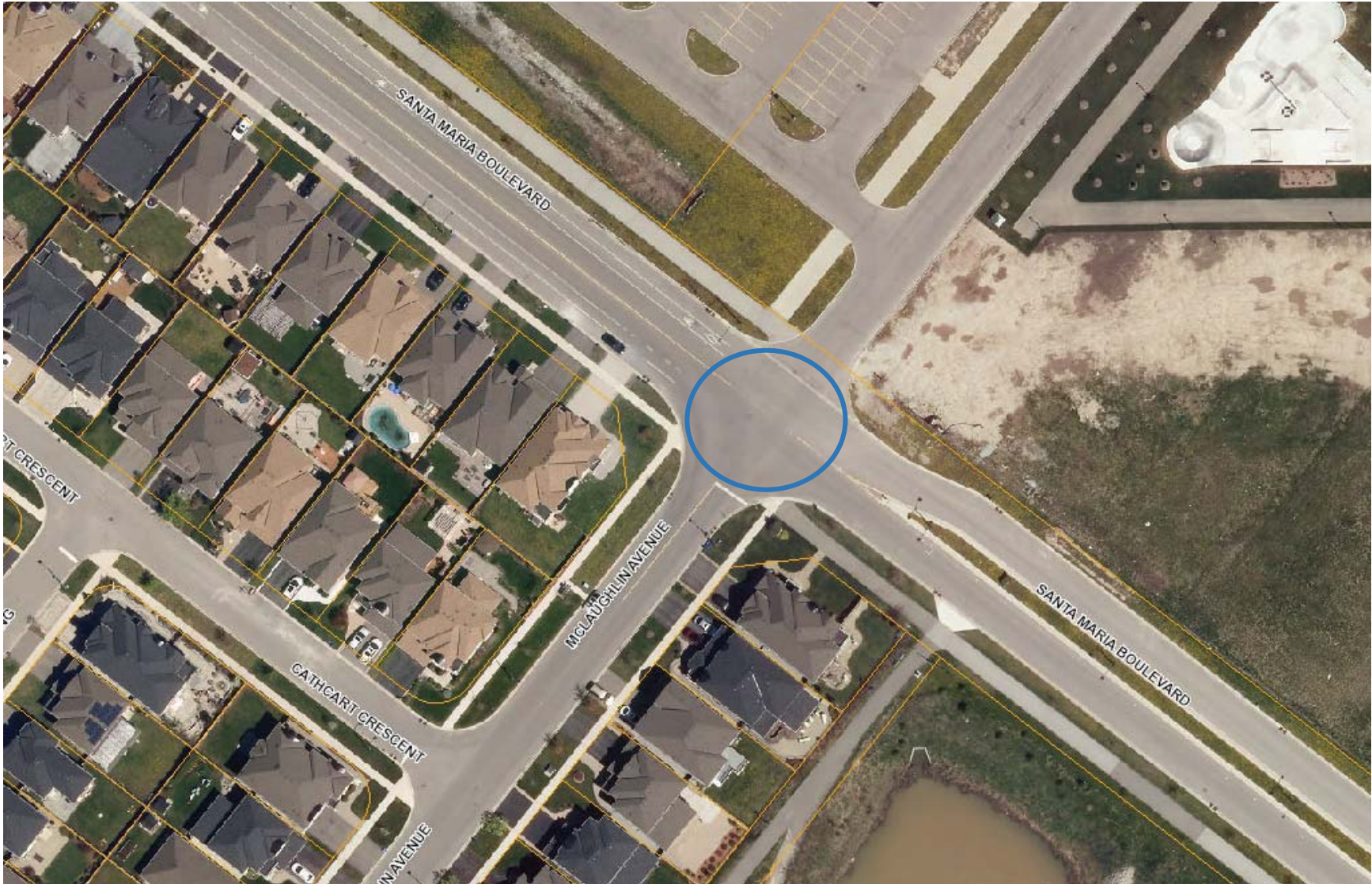
The intersection of Santa Maria Boulevard and McLaughlin Avenue is a four-legged intersection within an urban area. Santa Maria Boulevard is a collector roadway running north/south between Derry Road and the Milton Community Park/Tennis Club and is designated as a through highway with a posted speed limit of 50 km/h. McLaughlin Avenue is a local roadway running east/west between Asleton Boulevard and Santa Maria Boulevard, with a posted speed limit of 50 km/h.



The Corporation of the Town of Milton

Attachments
Appendix I - Location Map Appendix II - Schedule 12 and 13 By-law Amendment

CAO Approval
Andrew M. Siltala
Acting Chief Administrative Officer



LEGEND
Proposed All-Way Stop

Appendix I

Appendix II

Schedule 12 Through Highways - Stop To Be Deleted

By-law No.	Column 1 Highway(s)	Column 2 Location From	Column 3 Location To
By-law No. 053-2009	Santa Maria Boulevard	South limit of Derry Road	South limit of road

Schedule 12 Through Highways – Stop To Be Added

Column 1 Highway(s)	Column 2 Location From	Column 3 Location To
Santa Maria Boulevard	South limit of Derry Road	North limit of McLaughlin Avenue
Santa Maria Boulevard	South limit of McLaughlin Avenue	South limit of road

Schedule 13 Intersection - Stop Signs To Be Added

Column 1 Highway(s)	Column 2 Direction of Travel	Column 3 Stop On
Santa Maria Boulevard and McLaughlin Avenue	Northbound	Santa Maria Boulevard
	Southbound	Santa Maria Boulevard
	Eastbound	McLaughlin Avenue
	Westbound	Milton Sports Centre Private Access