



The Corporation of the Town of Milton

Report To:	Council
From:	M. Paul Cripps, P.Eng., Commissioner, Engineering Services
Date:	April 15, 2019
Report No:	ENG-009-19
Subject:	Implementation of Curve Parking Prohibitions-Beaver Court
Recommendation:	THAT a by-law be enacted to amend By-law 1984-1, as amended, to implement a parking prohibition on:

- **The east and south side of Beaver Court from a point 275m north of Laurier Avenue to a point 30m north easterly thereof**
- **The south and west side of Beaver Court from a point 360m northeast of Laurier Avenue to a point 25m south easterly thereof**
- **The north and west side of Beaver Court from a point 100m east of Beaver Court to a point 30m north westerly thereof**

AND THAT Schedule 1 of the Uniform Traffic Control Bylaw be amended accordingly (see Appendix II);

AND FURTHER THAT the appropriate by-laws be presented to Council for approval.

REPORT

Discussion

The Engineering Services Department has received a request from a resident on Beaver Court to prohibit parking on one side of the road through the curved portions. (see Appendix I). Currently, parking is allowed on both sides of Beaver Court.

When vehicles are parked through the curved portions of the road, traffic is forced into the oncoming lane. This condition is heightened during the winter months due to snow storage. The north/east and the north/west curves on Beaver Court have a road width



The Corporation of the Town of Milton

of approximately 8.4 metres. Having vehicles parked on both sides of the road through these curves can create safety issues, as vehicles must travel between the parked cars without adequate sight lines of oncoming traffic. The south/east curve has a wide road width of approximately 18 metres at the curve, however, the road narrows to 8.4 metres directly afterwards.

Prohibiting parking along the inside of the roadway at all three curves will increase the overall level of safety for motorists traveling on Beaver Court. The implementation of a parking prohibition through the inside of the curve portions of Beaver Court will eliminate approximately 12 on-street parking spaces.

The Engineering Services Department mailed out a notice to the homeowners residing directly through the curved portions of the road to allow them to provide input and voice their concerns. Only two residents of the 32 notified were opposed. One resident contacted staff and voiced opposition to implementing a parking prohibition on the north/east curve. The resident believed the parking prohibition was an unnecessary removal of on-street parking and that the current configuration is safe. Another resident contacted Councillor Best and voiced opposition to implementing a parking prohibition on the north/west curve.

The Engineering Services Department is recommending the implementation of curve parking prohibitions on the inside of all three curves on Beaver Court to improve the overall level of safety on this road.

Financial Impact

The cost to install the appropriate signage is approximately \$200.00.

Respectfully submitted,

M. Paul Cripps, P. Eng.
Commissioner, Engineering Services

For questions, please
contact:

Josip Kafadar, C.E.T., 905-878-7252 x2527
Traffic Technician

Attachments

Appendix I – Location Map

Appendix II – Schedule 1 By-Law Amendment

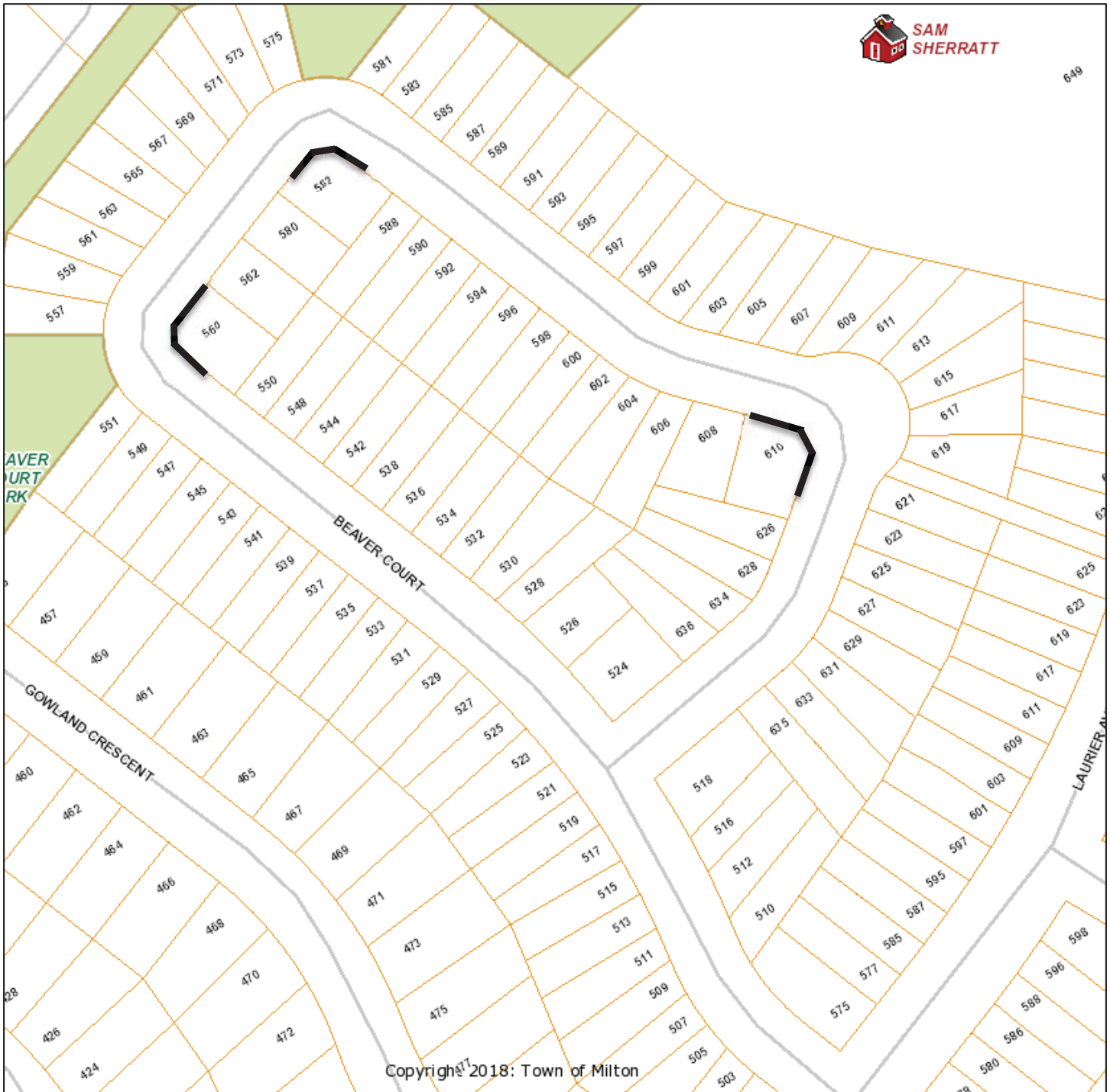


The Corporation of the Town of Milton

CAO Approval
William Mann, MCIP, RPP, OALA, CSLA, MCIF, RPF
Chief Administrative Officer



Beaver Court Parking Plan



Legend

— Proposed No Parking Anytime

Appendix II

Schedule 1 No Parking Anytime-Signs on Display To Be Added

Column 1 Highway(s)	Column 2 Location From	Column 3 Location To	Column 4 Side(s)
Beaver Court	point 275m north of Laurier Avenue	a point 30m north easterly thereof	East and South
Beaver Court	a point 360m northeast of Laurier Avenue	a point 25m south easterly thereof	South and West
Beaver Court	a point 100m east of Beaver Court	a point 30m north westerly thereof	North and West