



# The Corporation of the Town of Milton

Report To:	Council
From:	M. Paul Cripps, P. Eng., Commissioner, Engineering Services
Date:	January 21, 2018
Report No:	ENG-001-19
Subject:	Implementation of All-way Stops - Laurier Avenue and Vanier Drive, Sauve Street and Menefy Place
Recommendation:	<p><b>THAT a by-law be enacted to amend by-law 1984-1, as amended, to implement all-way stops at the intersections of:</b></p> <ul style="list-style-type: none"> <li>• Laurier Avenue and Vanier Drive (see Appendix I)</li> <li>• Sauve Street and Menefy Place (see Appendix II)</li> </ul>

**AND THAT Schedule 12 and Schedule 13 of the Uniform Traffic Control By-law be amended accordingly (see Appendix III);**

**AND FURTHER THAT the appropriate by-laws be presented to Council for approval.**

## REPORT

### Background

The Engineering Services department has received several inquiries over the past number of years requesting the implementation of all-way stops at the intersections of Laurier Avenue and Vanier Drive as well as Sauve Street and Menefy Place. Both of these intersections have been counted on numerous occasions and the counts have recently been updated to determine if the warrants for all-way stops have been fulfilled.

### Discussion

#### Laurier Avenue and Vanier Drive

The intersection of Laurier Avenue and Vanier Drive is a four-legged intersection within a residential subdivision. Vanier Drive is a local road running north/south and Laurier Avenue is a collector road running east/west. Laurier Avenue is designated as a through highway. Both of these roads have a posted speed limit of 50 km/h.

As a result of resident requests, the intersection of Laurier Avenue and Vanier Drive has been monitored over the past six years and the results are as follows:



# The Corporation of the Town of Milton

Count Date	Part "A"	Part "B"
January 22, 2013	94%	83%
June 16, 2015	96%	78%
October 10, 2018	100%	100%

The warrants consider the overall volume of traffic entering the intersection during the peak traffic times as well as the ratio of main street to minor street traffic and pedestrian volumes. In order for an all-way stop to be warranted by volume, both Parts "A" and "B" must equal 100%. Since both Part "A" and Part "B" of the warrant have met 100% an all-way stop is warranted.

A review of the three year collision history at this intersection has been completed and there have been a total of two reportable collisions. One collision was classified as a right angle collision and the second as a rear end collision.

### **Sauve Street and Menefy Place**

The intersection of Sauve Street and Menefy Place is a three-legged intersection within a residential area. Menefy Place runs east/west and is designated as the through highway and has a posted speed limit of 50 km/h. Sauve Street is a local roadway that runs north/south with a flashing 40 km/h school zone between Derry Road and a point 160m north of Menefy Place, the remainder is posted at 50km/h.

This intersection has been counted on three separate occasions over the past four years, as a result of ongoing development in this area and resident requests. The results are as follows:

Count Date	Part "A"	Part "B"
April 3, 2014	80%	100%
April 16, 2015	88%	99%
October 4, 2018	100%	100%

Since both Part "A" and Part "B" of the warrant have met 100% an all-way stop is warranted at this intersection.

A review of the three year collision history at this intersection has been completed and one collision occurred, which was a rear end collision.

As a result of the warrants being fulfilled at the intersections of Laurier Avenue and Vanier Drive as well as Sauve Street and Menefy Place, the Engineering Services Department recommends the installation of all-way stops at both of these intersections.



# The Corporation of the Town of Milton

---

## Financial Impact

The estimated cost of installing these all-way stops is approximately \$1,600.00, which will be funded from the 2019 operating budget.

Respectfully submitted,

M. Paul Cripps, P. Eng.  
Commissioner, Engineering Services

For questions, please  
contact:

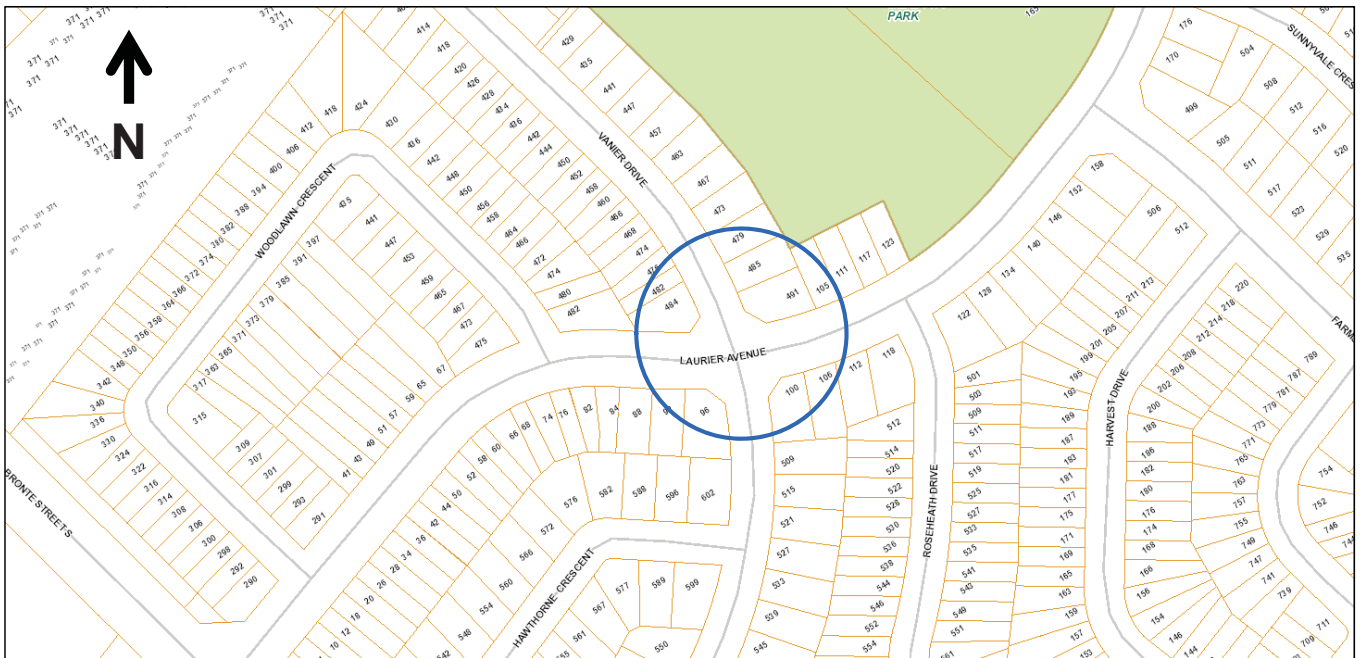
Josip Kafadar, C.E.T. 905-878-7252 x 2527  
Traffic Technician

## Attachments

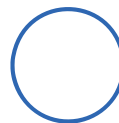
Appendix I – Location Map Laurier Avenue and Vanier Drive  
Appendix II – Location Map Sauve Street and Menefy Place  
Appendix III – By-law Amendments

CAO Approval  
William Mann, MCIP, RPP, OALA, CSLA, MCIF, RPF  
Chief Administrative Officer

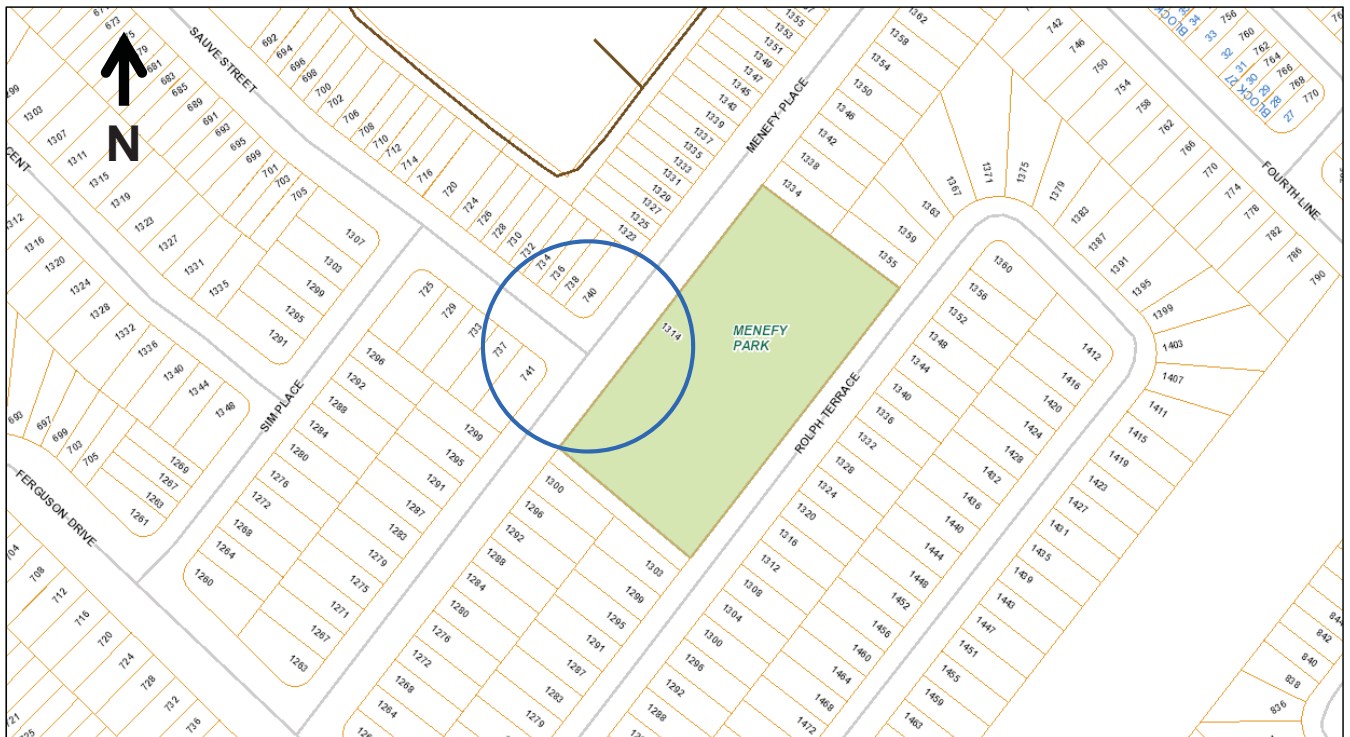
### Laurier Avenue and Vanier Drive proposed all-way stop



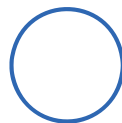
**LEGEND**  
Proposed All-Way Stop



### Sauve Street and Menefy Place proposed all-way stop



**LEGEND**  
Proposed All-Way Stop



**Appendix II**

## Appendix III

### Schedule 12 Through Highways - Stop To Be Deleted

Column 1 Highway(s)	Column 2 Location From	Column 3 Location To
Laurier Avenue	West limit of Bronte Street	East limit of Farmstead Drive
Menefy Place	east limit of Ferguson Drive	west limit of Fourth Line

### Schedule 12 Through Highways – Stop To Be Added

Column 1 Highway(s)	Column 2 Location From	Column 3 Location To
Laurier Avenue	East limit of Bronte Street South	West limit of Vanier Drive
Laurier Avenue	East limit of Vanier Drive	West limit of Farmstead Drive

### Schedule 13 Intersection - Stop Signs To Be Added

Column 1 Highway(s)	Column 2 Direction of Travel	Column 3 Stop On
Laurier Avenue and Vanier Drive	Northbound	Vanier Drive
	Southbound	Vanier Drive
	Eastbound	Laurier Avenue
	Westbound	Laurier Avenue
Menefy Place and Sauve Street	Southbound	Sauve Street
	Eastbound	Menefy Place
	Westbound	Menefy Place